

ORGANISATION IS THE FRAMEWORK

A GOOD SYSTEM SHORTENS THE
ROAD TO THE GOAL.

MAY EDITION-2

TOVP ARCHITECTURE DEPARTMENT



PRESENTED BY
-TOVP ARCHITECTURE DEPARTMENT

DATED FOR-
13.05.2019

FLOW OF INFORMATION

CLIENT BODY

1. Bhavananda Parbhu
2. Sadbhuja Prabhu
3. Pujaris
4. Mayapur Master Plan
5. Planetarium
6. Mayapur TV

VENDORS

1. Sandstone
2. Clocks
3. Light Fixtures
3. Marble
4. Other Supplies

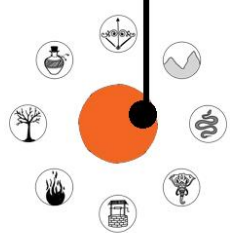
THE SYSTEM

CONSULTANTS

1. CW
2. Structural
3. MEP
4. Environmental
5. Accoustics
6. Lighting



ToVP Architecture Team



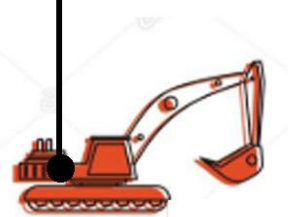
Concept Design



Review



Approval



Sign off for
construction



Working Drawings

COMMUNICATION SYSTEM

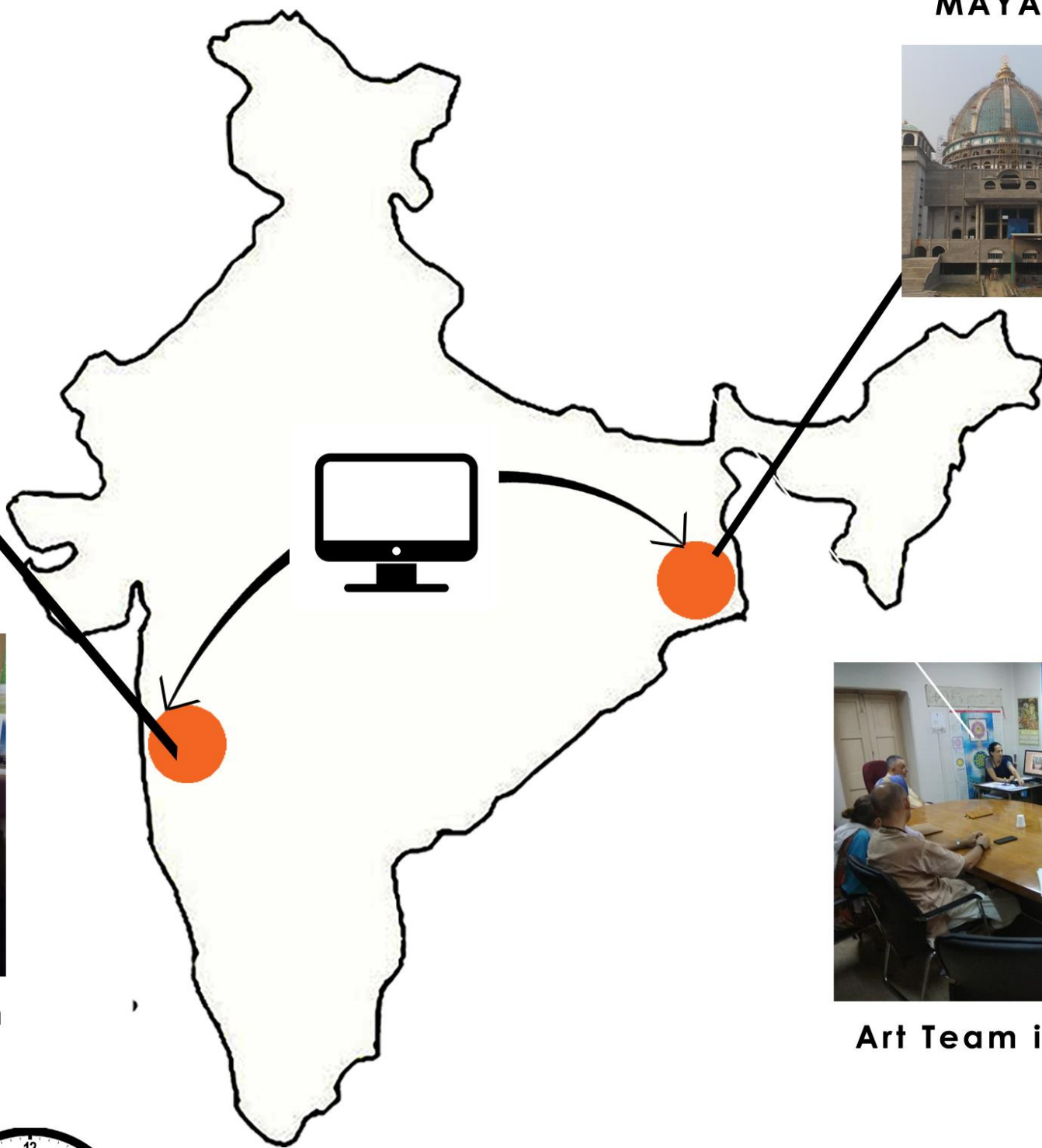
PUNE



MAYAPUR



Architecture Department in Pune



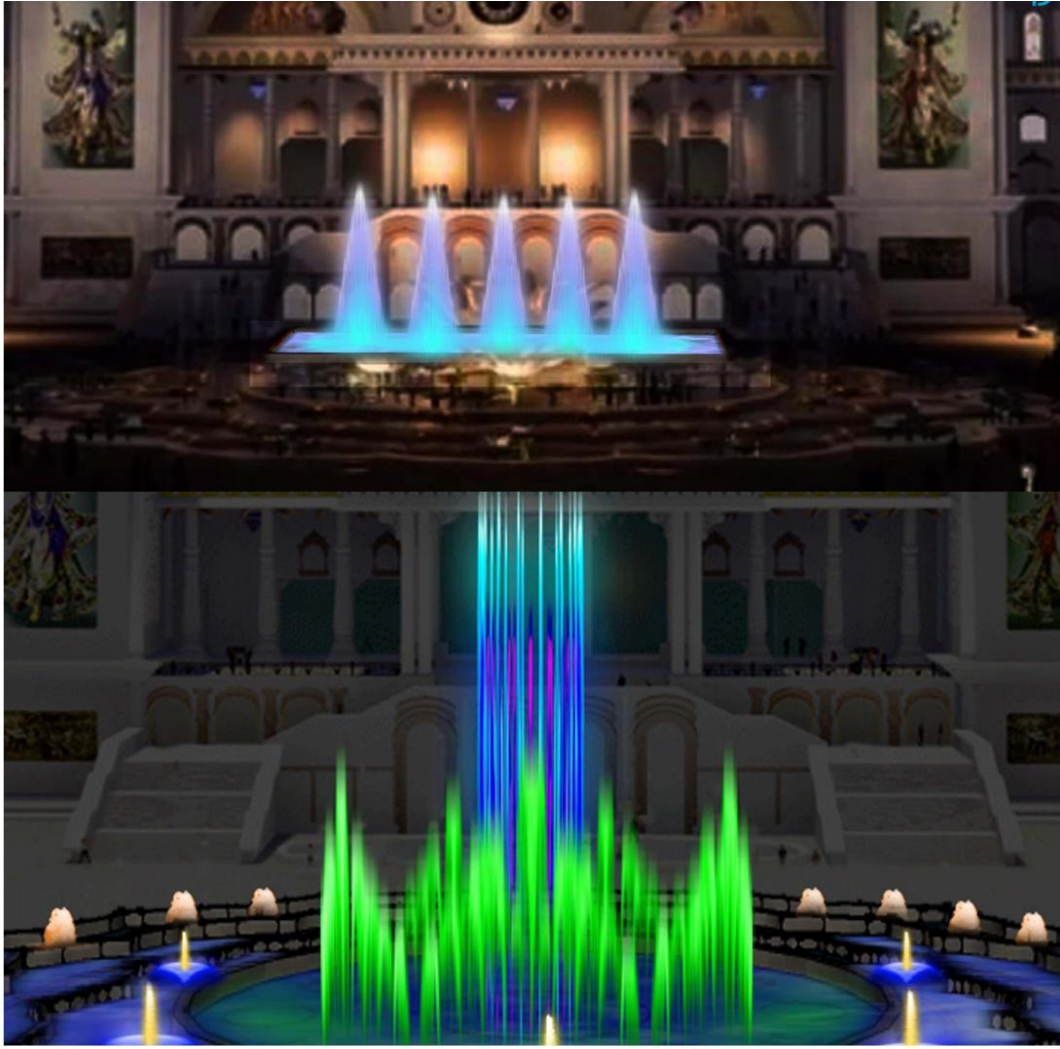
Art Team in Mayapur



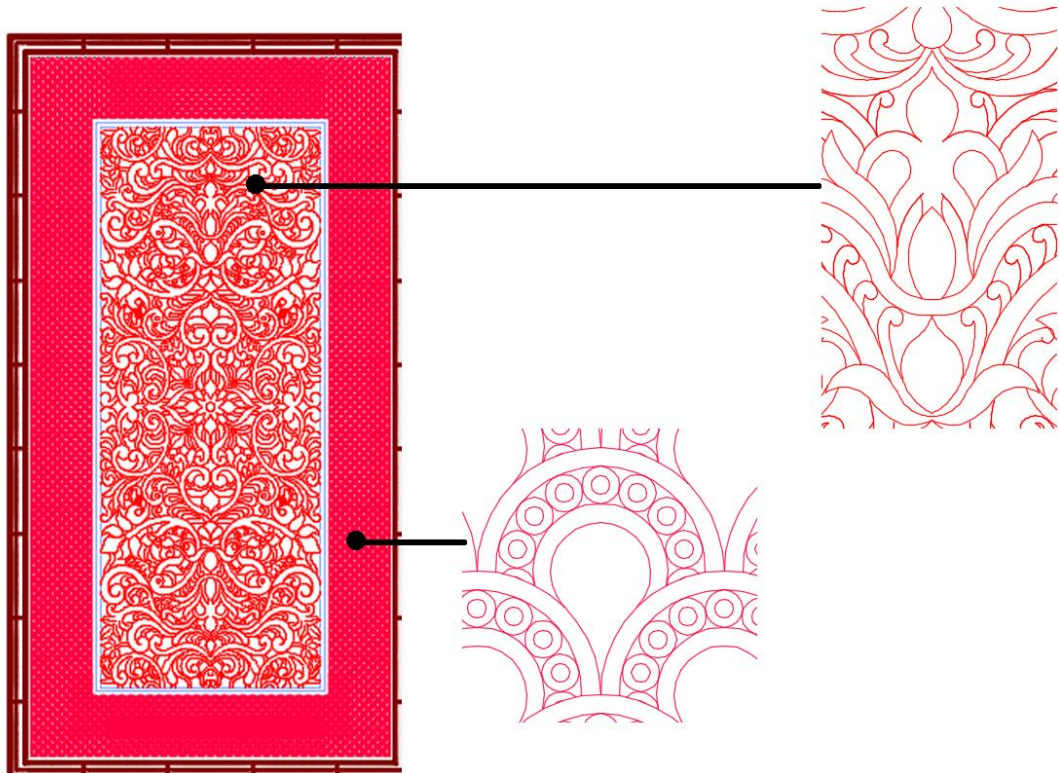
WEEKLY MEETINGS

Monday	Tuesday	Wednesday	Thursday	Friday
WEEK PLANNING	ARCHITECTURE DEPARTMENT MEET	MAYAPUR TEAM+ARCHITECTS	DESIGN ASSESMENT	<div>DRAWING SCHEDULE ASSESMENT</div> <div>CUSHMAN+ ARCHITECTS+ MAYAPUR TEAM</div>

CYNOSURE



1. FOUNTAIN WORKS



2. JAALI WORKS

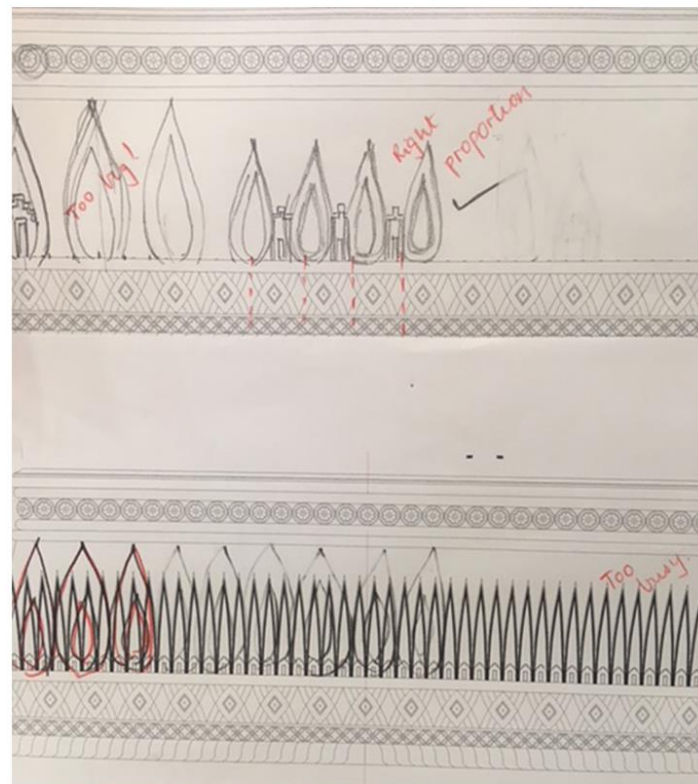
PAL



3. VISIT TO CHINA FOR LIGHTING



4. CLOCKS



5. DRAWING BOARDS

Please find the MAC resolution in relation to proposed factory

MAC April 20

TOVP Bronze factory

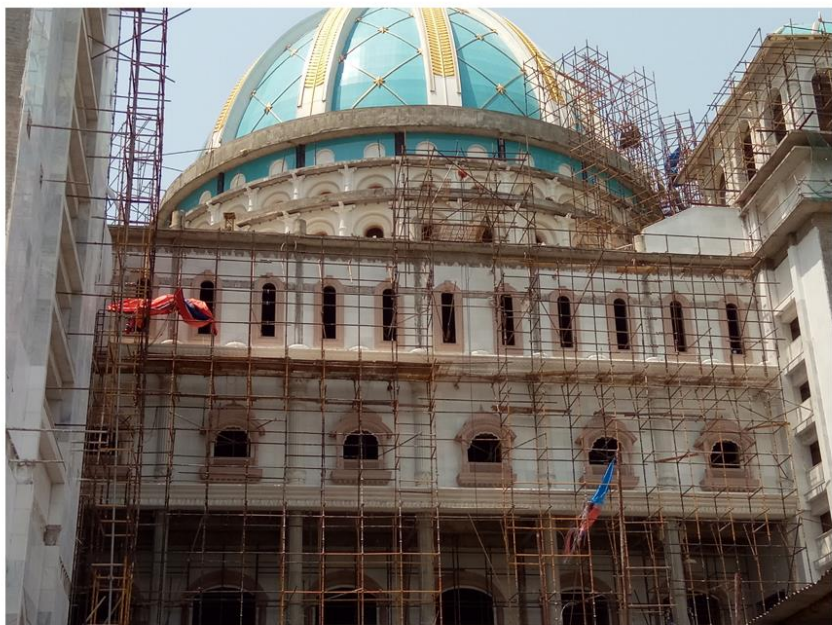
Resolved: MAC requests TOVP management to sit with MPT to look for suitable location for the Bronze factory while taking into consideration long term cottage industry development.

Vote: All in favor



6. BRONZE FACTORY
Approval Recieved

CONSTRUCTION HIGHLIGHTS



Narsimhadev Wing, Front GRC Wrok



Clock Tower Marble Work



10%



Planetarium Wing , Cornice Fixing



25%



Narsimhadev Wing Rear Side Elevation



85%



ARCHITECT OF THE WEEK

DIPTI BHALERAO

ASSISTANT ARCHITECT

HER SHARING

The Temple got her to apply not only her skills of design in the field, but also management and co-ordination by acting as a catalyst between the members of the TOVP Team.

"Working on the TOVP is more like working on myself towards a positive and spiritual approach to life!"

CONTRIBUTIONS TO THE TOVP

"For every minute spent in the organization, an hour is earned." Being a task master, Dipti puts her skills to the best of her use on a project this large in scale and the number of people. It is necessary that the team is well coordinated and communicated, and she is just the mediator required.

QUALIFICATION

DIPLOMA IN
ARCHITECTURE,
KLES SOCIETY,
KARNATAKA

INTERESTS AND AWARDS

Participated in the steel
frame technology
exhibition called- **Quick
Build Homes**