



TOVP ARCHITECTURE DEPARTMENT

APPLIED SERVICES

MAY 2019 - EDITION 2

The technicalities matter a lot, but the unifying vision matters more.



PRESENTED BY
-TOVP ARCHITECTURE DEPARTMENT

DATED FOR
20.05.2019

THE TEAM

If everyone is moving forward together, then success takes care of itself.

1.ToVP MEP TEAM

Shravananand Prabhu
Premavatar Gauranga Prabhu
Radhavallabha Prabhu
Anupama Seth

2.IT TEAM - ASK

Savya

3.E - SOLUTIONS

Rupa
Mohan
Srilaxmi
Bhaskar
Sarvanan

4. C&W

Aparna
Sachin
Arun
Manoj

5. LIGHTING

Ministry of lights

6. KITCHEN

Sandeep

7. GAS LINE

Futuristic Gas Systems



PROCEDURE- PUJARI FLOOR



INPUTS FROM PUJARIS

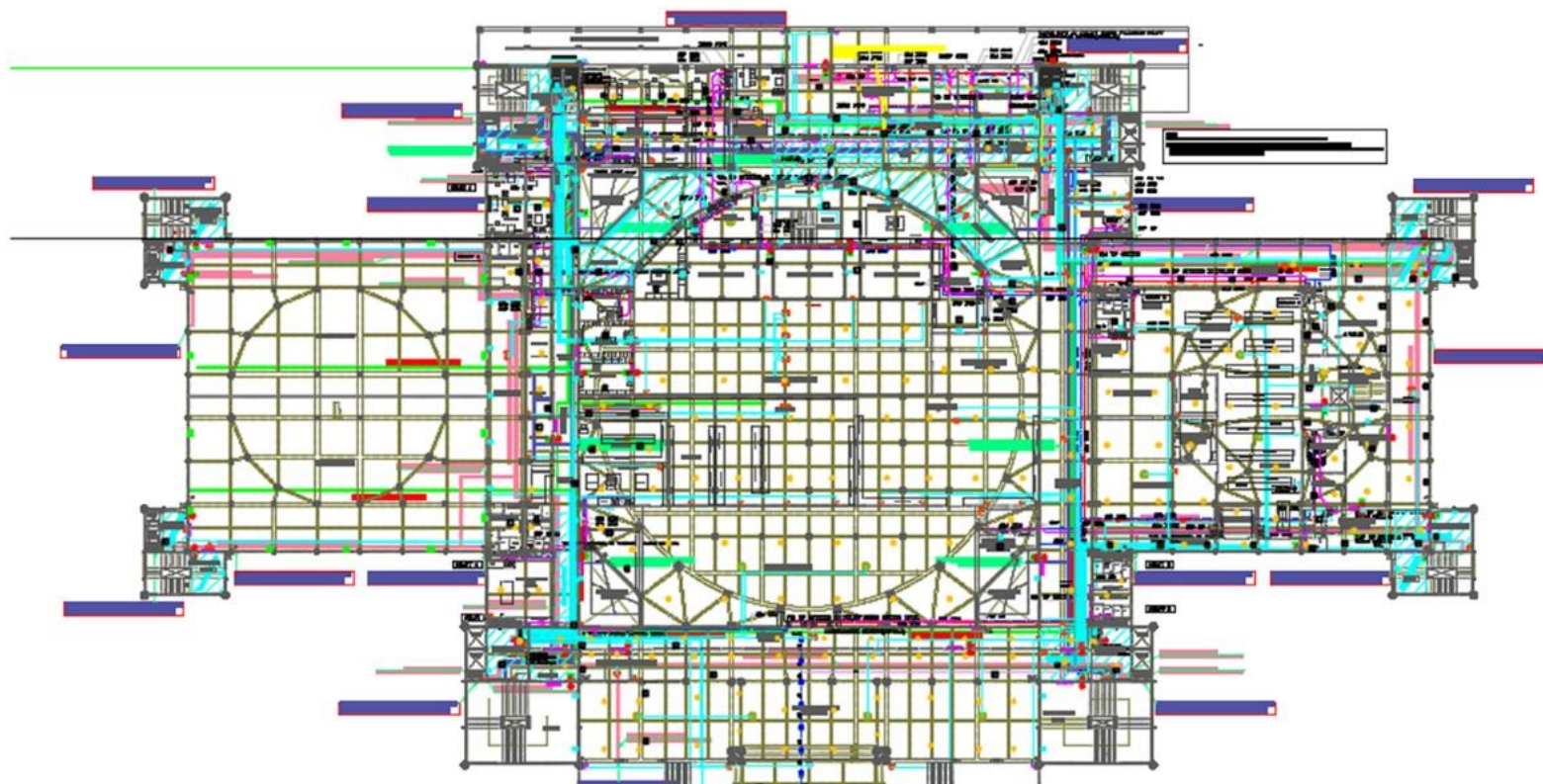
ToVP ARCHITECTS

ARCHITECTURAL DRAWINGS

CHECKING

ToVP ARCHITECTS +
SHIRISH PRABHU ,
PREMAVATAR GAURANGA PRABHU +
C&W

RELEASED FOR CONSTRUCTION



PROGRESS ON SITE- PUJARI FLOOR

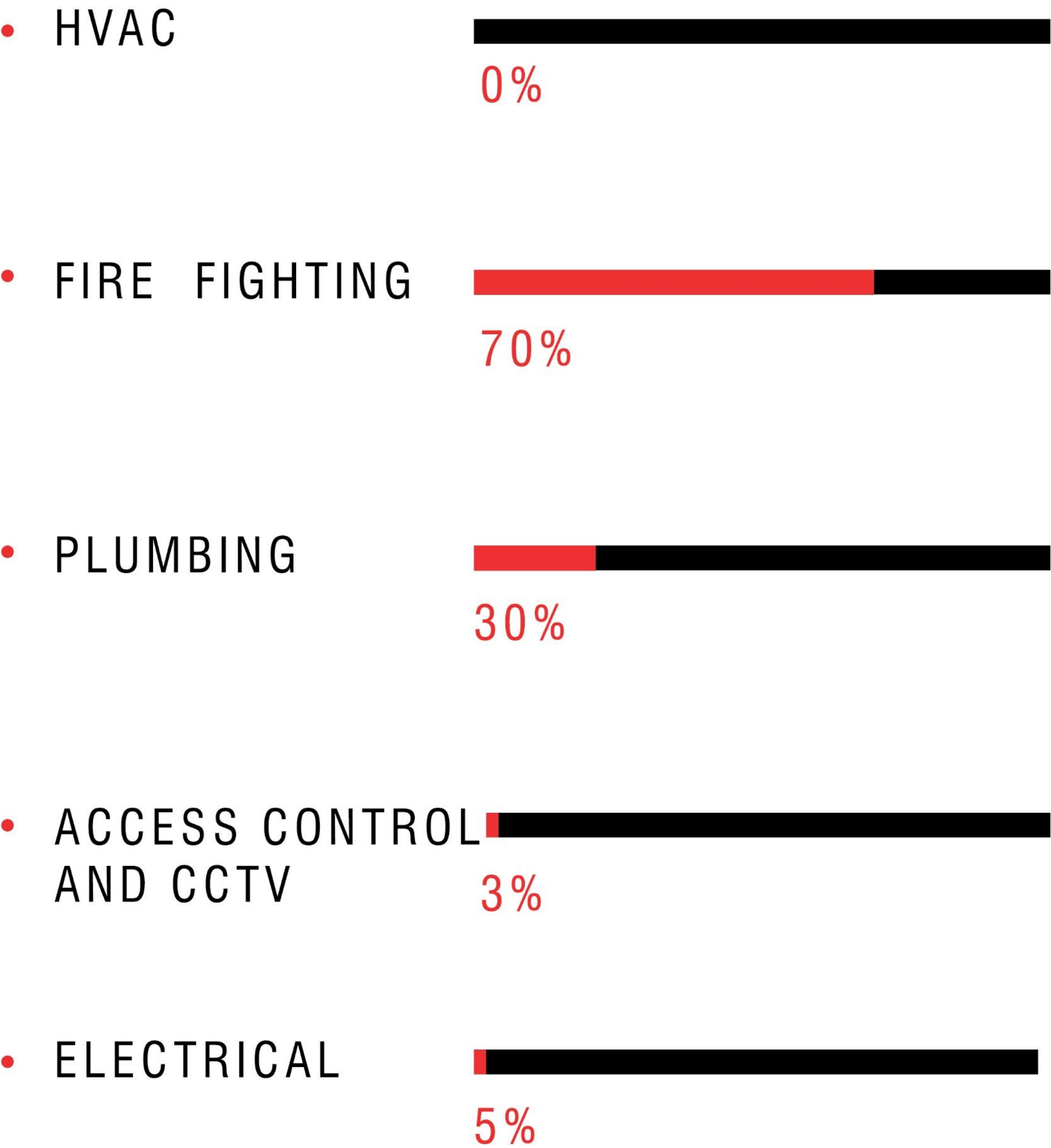


PHOTO GALLERY - PUJARI FLOOR



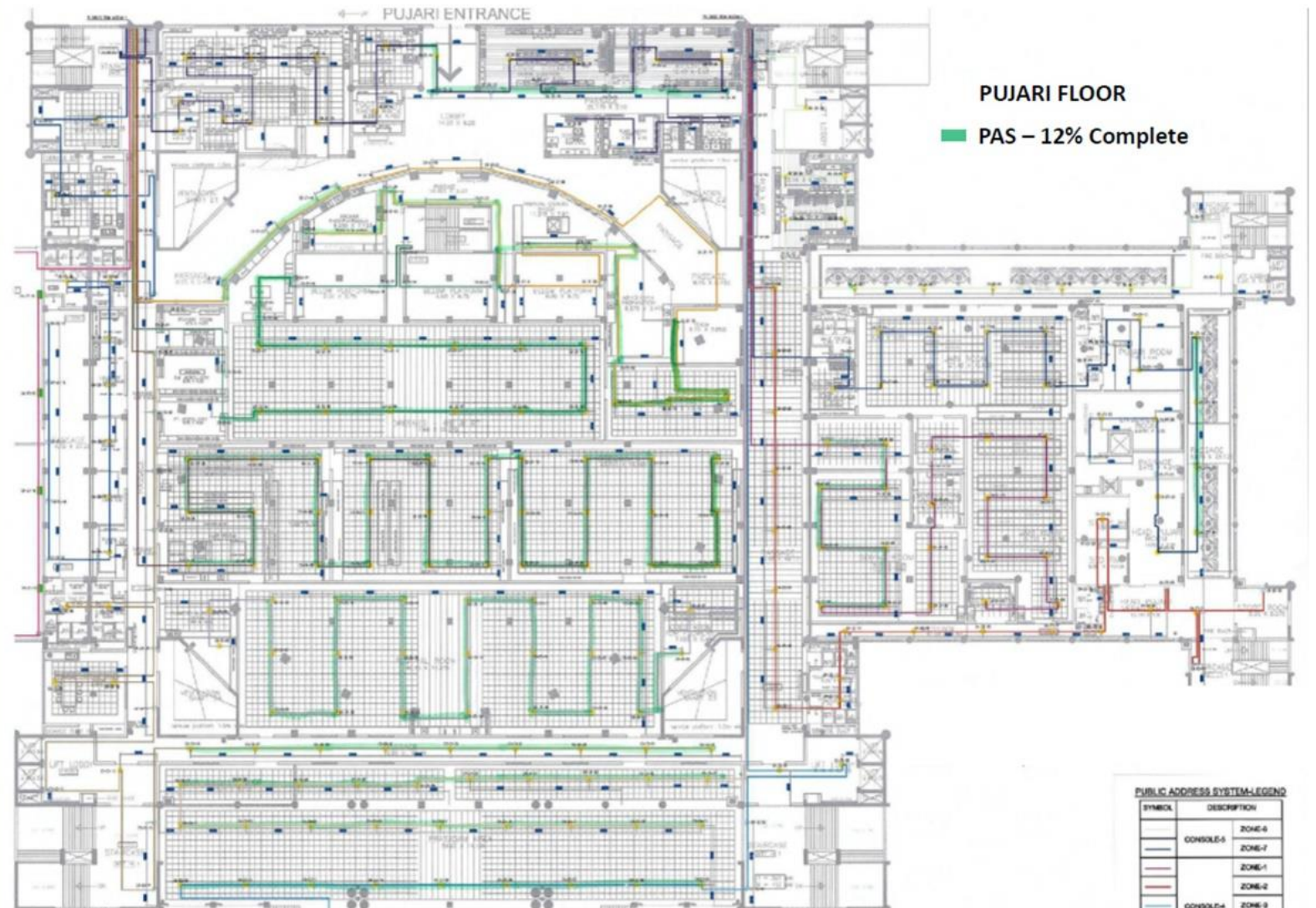
FAS AND PAS WORK



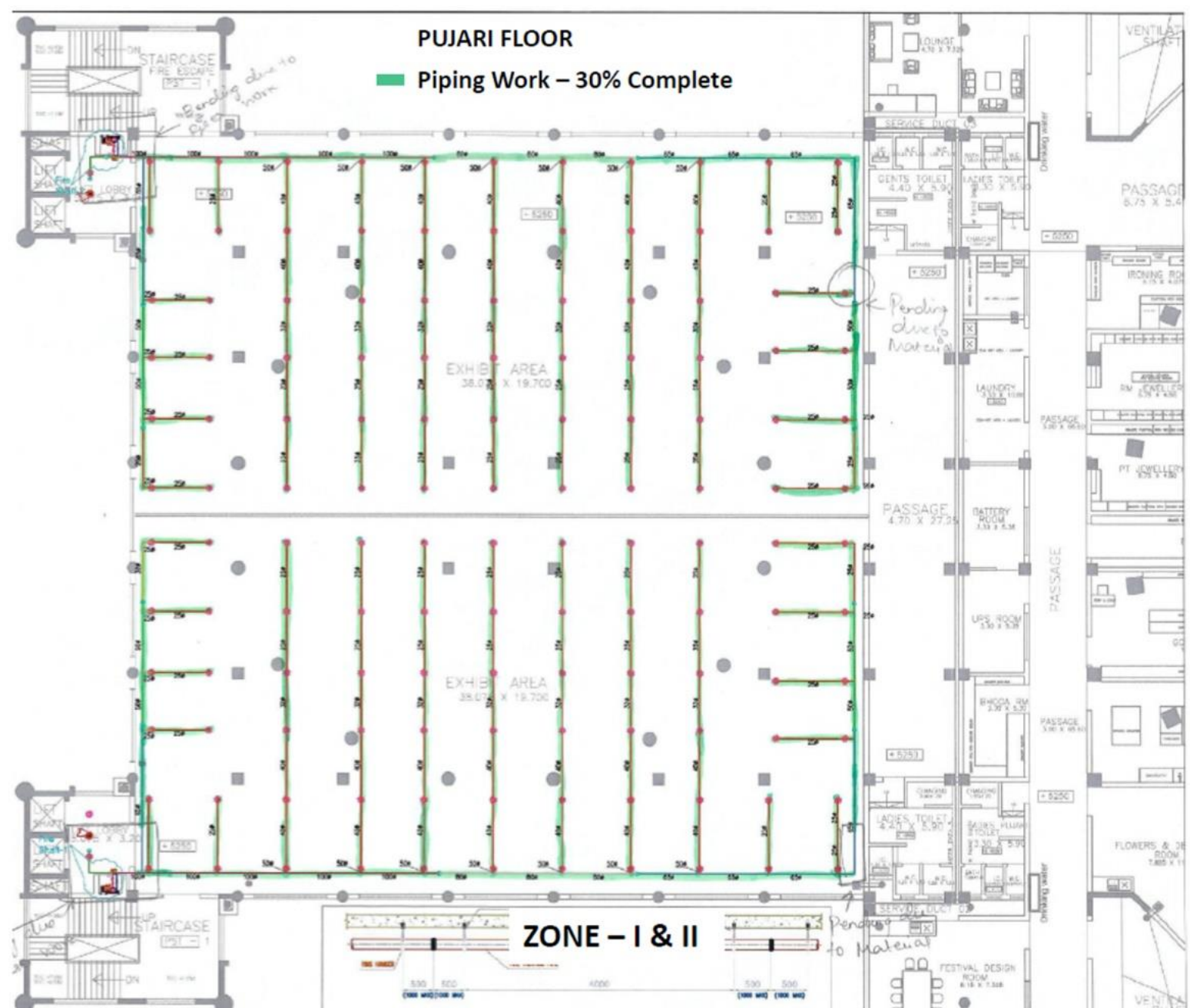
SPRINKLER PIPING WORK



INTERNAL PIPING WORK



FAS AND PAS WORK



PIPING WORK



ARCHITECT OF THE WEEK

ANUPAMA SHETH

TEAM LEAD

HER SHARING

'Measure twice, Cut once'

This is something the Architecture Department follows thoroughly and Anupama lends herself beautifully to the principle. As a highly dedicated professional, she is an asset to the project.

CONTRIBUTIONS TO THE TOVP

Anupama has poured her skills and fidelity into the Project for ten years, consistently. All the drawings heading in from various consultants are checked at her desk to ensure they accommodate homogeneously and harmoniously with original structural content. She leads the MEP co ordinates schemes and liaise on with C&W regularly and makes herself available anytime, day or night to resolve technical issues that arise.

QUALIFICATION

Bachelor of Architecture ,
MMCOA, Pune
Registered Architect with
The Council of
Architecture Delhi

ACHIEVEMENTS

Principal Architect-
PIANKH Designing
Spaces.