

JUNE 2019 - EDITION 2

# spectacle



COLOUR- TEXTURE | SYMBOLISM | PHILOSOPHY

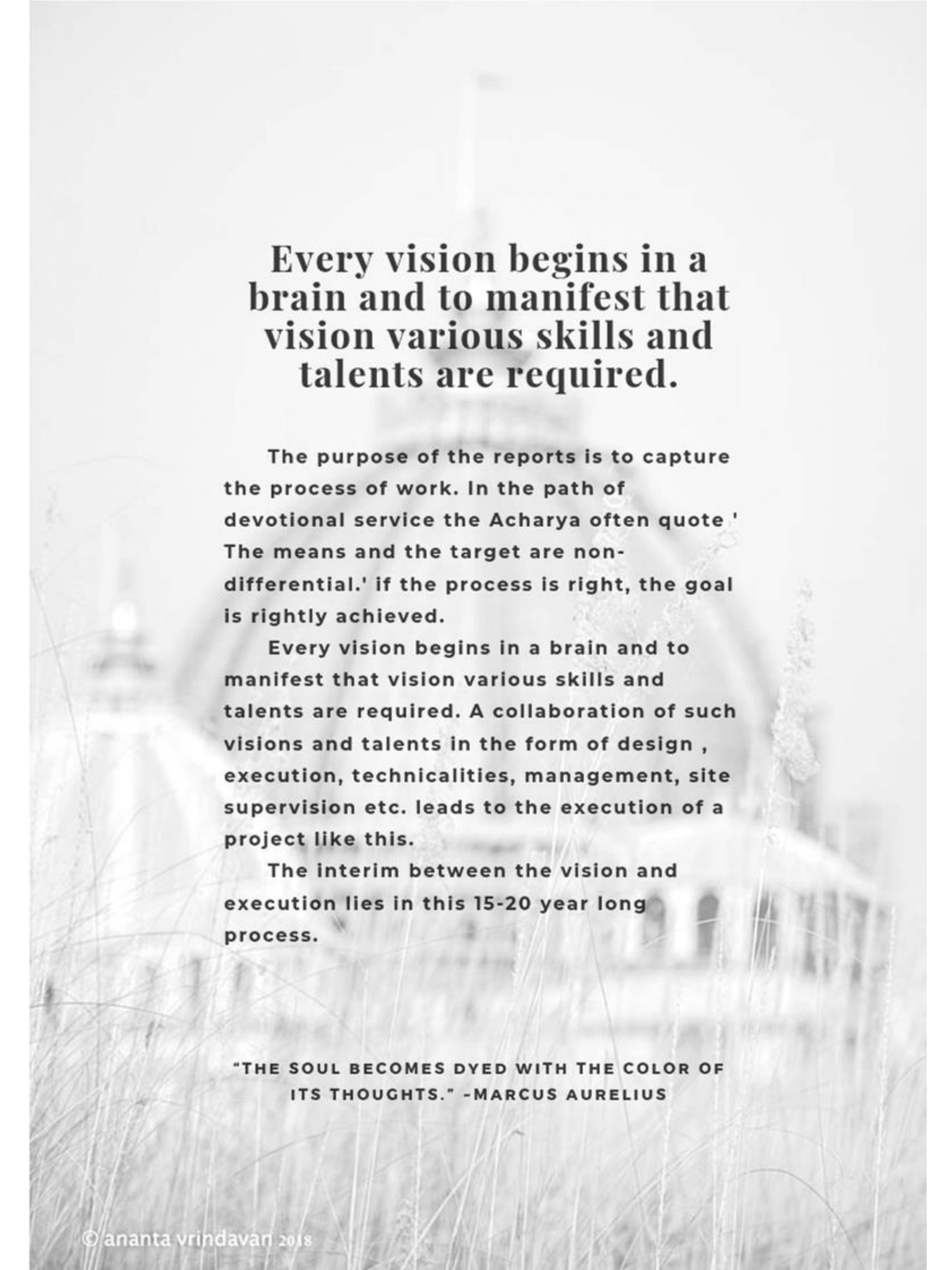


**TOVP ARCHITECTURE DEPARTMENT**



PRESENTED BY  
-TOVP ARCHITECTURE DEPARTMENT

DATED FOR-  
21.06.2019



## **Every vision begins in a brain and to manifest that vision various skills and talents are required.**

**The purpose of the reports is to capture the process of work. In the path of devotional service the Acharya often quote 'The means and the target are non-differential.' if the process is right, the goal is rightly achieved.**

**Every vision begins in a brain and to manifest that vision various skills and talents are required. A collaboration of such visions and talents in the form of design , execution, technicalities, management, site supervision etc. leads to the execution of a project like this.**

**The interim between the vision and execution lies in this 15-20 year long process.**

**"THE SOUL BECOMES DYED WITH THE COLOR OF ITS THOUGHTS." -MARCUS AURELIUS**

## MAGNITUDE - A VISUAL EXTENSION



*The quality of the architecture gets determined by relating these elements, both in the interior spaces and in the spaces around buildings.*

Architectural volume is the point of contact between mass and space. Architectural forms, textures, materials and colours combine to inject a quality or spirit that articulates space. Whereas the heights and volume of a space, helps in modulation of light and shade, and the impact the building has on the human scale. The quality of the architecture gets determined by relating these elements, both in the interior spaces and in the spaces around buildings.

The ToVP portrays a very similar philosophy to its heights and variation in the sizes of its domes. The golden ratio kept in mind while determining the heights of the dome makes the temple look proportionate and viable to the eyes.

In the interiors, the podium space reaches the top without any divisions in floors leading to the opulence and magnificence the space has to offer. While to break the monotony, the Parikrama path surrounding the podium is narrower and lower in its heights. Thus the balance between the heights and widths is achieved.



**MOOD IMPARTED BY  
COLOUR-TEXTURE  
EXTERIORS**



**Blue**

Identity

**Clay tiles**

Blue emerging atop. Reflecting the sky, merging in the macrocosm and has its own strength, yet merging with the sky.

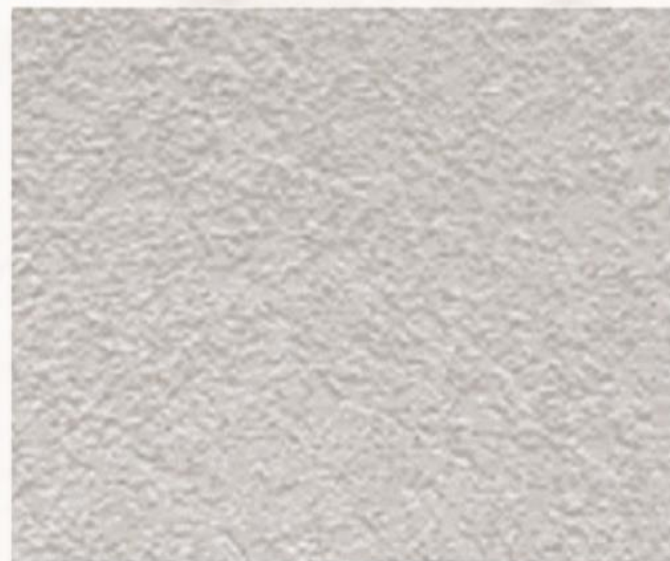
**Pink**

Gentle + Strong



**Sandstone**

Strength in the rough texture, reflecting the old tradition of sacred spaces



**White**

Purity

**Marble, GRC**

Reflecting the Purity in its force and integrity.

**Gold**

Opulence

**Titanium Nitride**

Inspired from the Russian Jewel box, signifying the house of Lord is a jewel box



# MOOD IMPARTED BY COLOUR-TEXTURE INTERIORS



## **Green**

Peace

## **Marble**

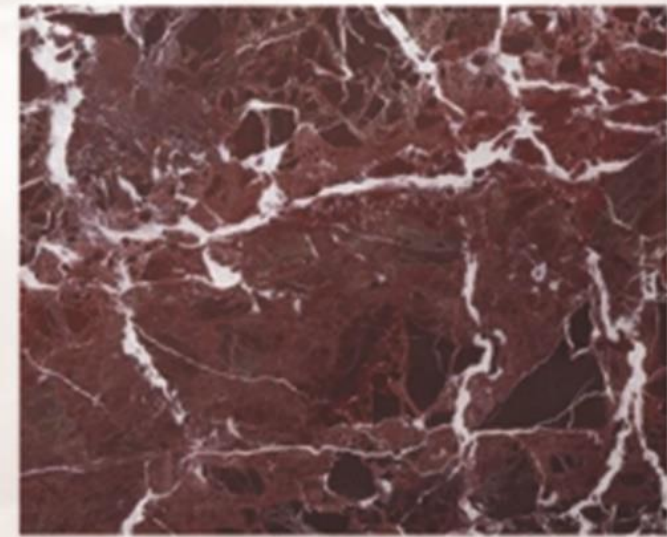
Depiction of naturalness in the form of material and colour. Has an earthy effect

## **Red**

Strength

## **Marble**

Reflection of the Vibrancy the Temple has to offer.

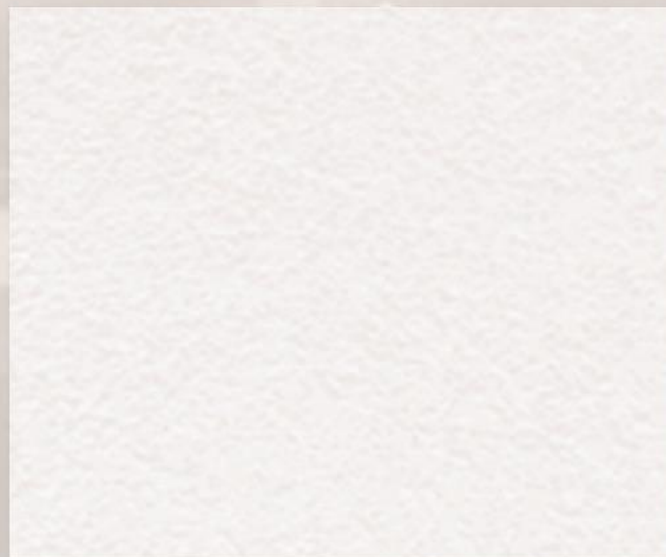


## **White**

Purity

## **Marble, GRC**

Reflecting the Purity , force and integrity and balances the gravity of black



## **Gold**

Opulence

## **Titanium nitride**

Inspired from the Russian Jewel box, signifying the house of Lord is a jewel box





**MOOD IMPARTED BY  
COLOUR-TEXTURE  
NARSIMHADEV WING**



**Black**

Power

**Granite**

To evoke the spirit of power, ferocity and severity of lord Narsimhhadev

**Gold**

Opulence



**Titanium Nitride**

Reflects opulence and abundance the Temple has to offer



**White**

Purity

**Marble, GRC**

Reflecting the Purity in its force and integrity. Help to balance the gravity of black

# METAPHOR IN ARCHITECTURE



## changing bodies

*one thing is certain, uncertainty of life*

Whoever you are, your body is changing. You once had the body of a child.. Yet something is constant. That something is the consciousness within the body.

## astrological clocks

*"You can have it all. Just not all at once."*

There are a few instances in the past, where time was controlled by Krsna for upholding Dharma or for Bhaktas. So a true devotion in Him only will help us survive the ravages of time



## chatris

*Culture is a product of people's history*

The old architecture - especially from vernacular - has much to teach us, as it always develops a typology of fundamental sense. The Chatri reflects vernacular borrowings from Bengal, as an ode to the heavy rainfalls.





# ARCHITECT OF THE WEEK

AISHWARYA JADHAV

ARCHITECTURAL COLUMNIST

## HER SHARING

The Temple put forth a platform to explore Aishwarya's interest in words and graphics. A combination of the two results in the form of a weekly report that provides a visual tour highlighting various aspects of the Temple.

*'It is a privilege to be able to work on the ToVP on a different architectural tangent. Working on the Temple has broadened my perspective on various fronts.'*

## QUALIFICATION

B.Arch- Pune  
University, Registered  
with The **Council of  
Architecture, Delhi**

## INTERESTS AND

## AWARDS

Art , Calligraphy and  
Visualization  
Workshops' Host- The  
Design Tour.

## CONTRIBUTIONS TO THE TOVP

Fervent workers face a perennial challenge of being submerged in their Karma Yoga- to an extent of becoming invisible. Aishwarya lends her creative mind to capture the fervor of the ToVP Architecture Office. She observes, records and represents in formats that turn the 'invisible' into a visible inspiration.