

THE DAWN UNFOLDS

FENESTRATION

VOLUME ONE
JULY 2019



FRAME VIEWS AND BRING NATURE INSIDE.



PRESENTED BY
TOVP ARCHITECTURE DEPARTMENT

DATED FOR-
12.07.2019

CONTENTS

1 OVAL WINDOWS

Dummy windows inspired by the Bramhanda Egg

2 DOME TIER WINDOWS

to portray a dramatic play of light and shadow amidst the passages inside

3 KALASH WINDOWS

used for natural ventilation for air to escape

4 STAIRCASE TOWER

these formulate to be the lungs of the structure. The jaalis in the tower bring in fresh air and is then escaped from the kalash windows

5 UTILITY FLOOR OPENING

as a flood chamber, the jaalis are kept open in case of emergencies

6 JHAROKAS

inspired from the typical Rajasthani openings

7 MAIN ENTRANCE

the process of entering the Temple

8 GREEN TINTED GLASS

-an attempt of introducing modernism into the Architecture

FROM THE HEAD ARCHITECT

“The sun never knew how great it was until it hit the side of a building.”

Louis I. Kahn



Walls distinguish the interior space of the building from its exterior. The theatrical experience within the building is created by the play of light, which is determined by the size and location of the openings.

ENTERING THE TEMPLE



Walking through the entrance doors the vision of the pilgrim bursts open into a soaring space of domes creating a feeling of awe and references. The volume and the space have an overwhelming effect on the user leaving one reminiscing their visit.

MAIN ENTRANCE

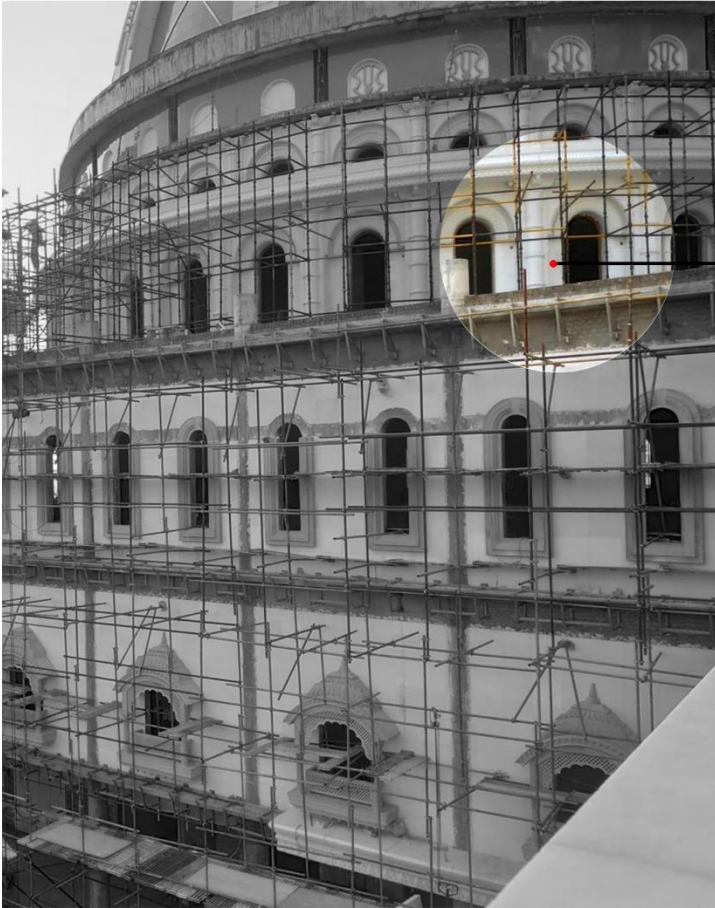


Axis leading to the Temple



The philosophy followed to enter the temple is meditative , and gives a sense of tranquillity. The path that leads to the Temple is serene with the elements that surround it. Like, the fountains, the landscape, the grand staircase that steer to beginning of the ToVP.

DOME TIER WINDOWS



LOCATION- DOME TIER 1

DESIGN THEORY

The doors act as a proportionate series of openings that make way for subtle yet dominant sunlight into the interiors. These creative, dramatic and beautiful patterns of light and shadow onto the floor, lead to a serene experience for the user.



SAMPLE WINDOW

MATERIALS USED



Clear Glass



Wooden Frame



Play of Light and Shadow

OVAL WINDOWS



LOCATION- DOME

DESIGN THEORY

The Bramhanda egg on the casual ocean is potrayed on the window in the form of the waves at the bottom with an oval opening above it.

MATERIALS USED



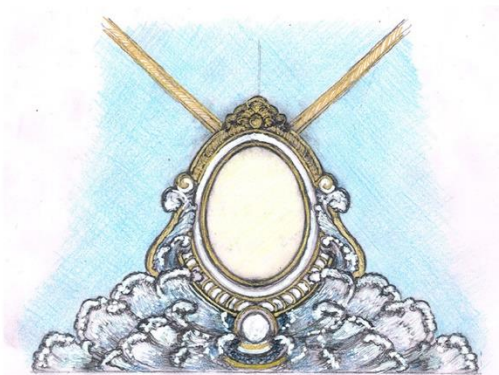
Titanium Nitride



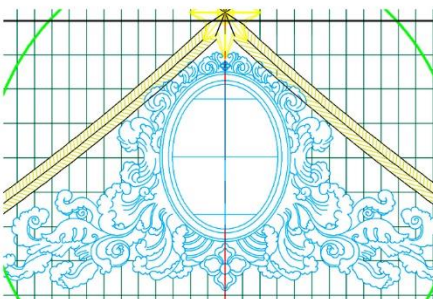
Glass Reinforced
Concrete



Glass



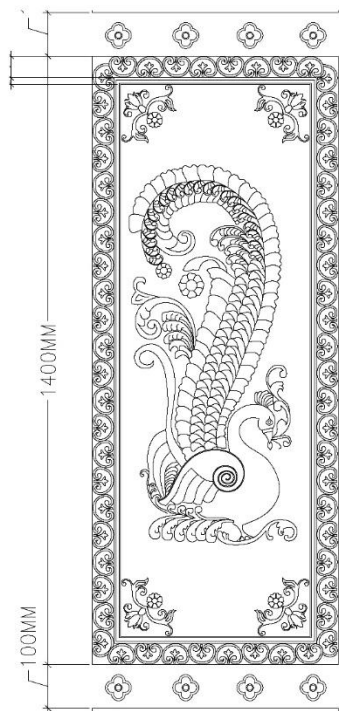
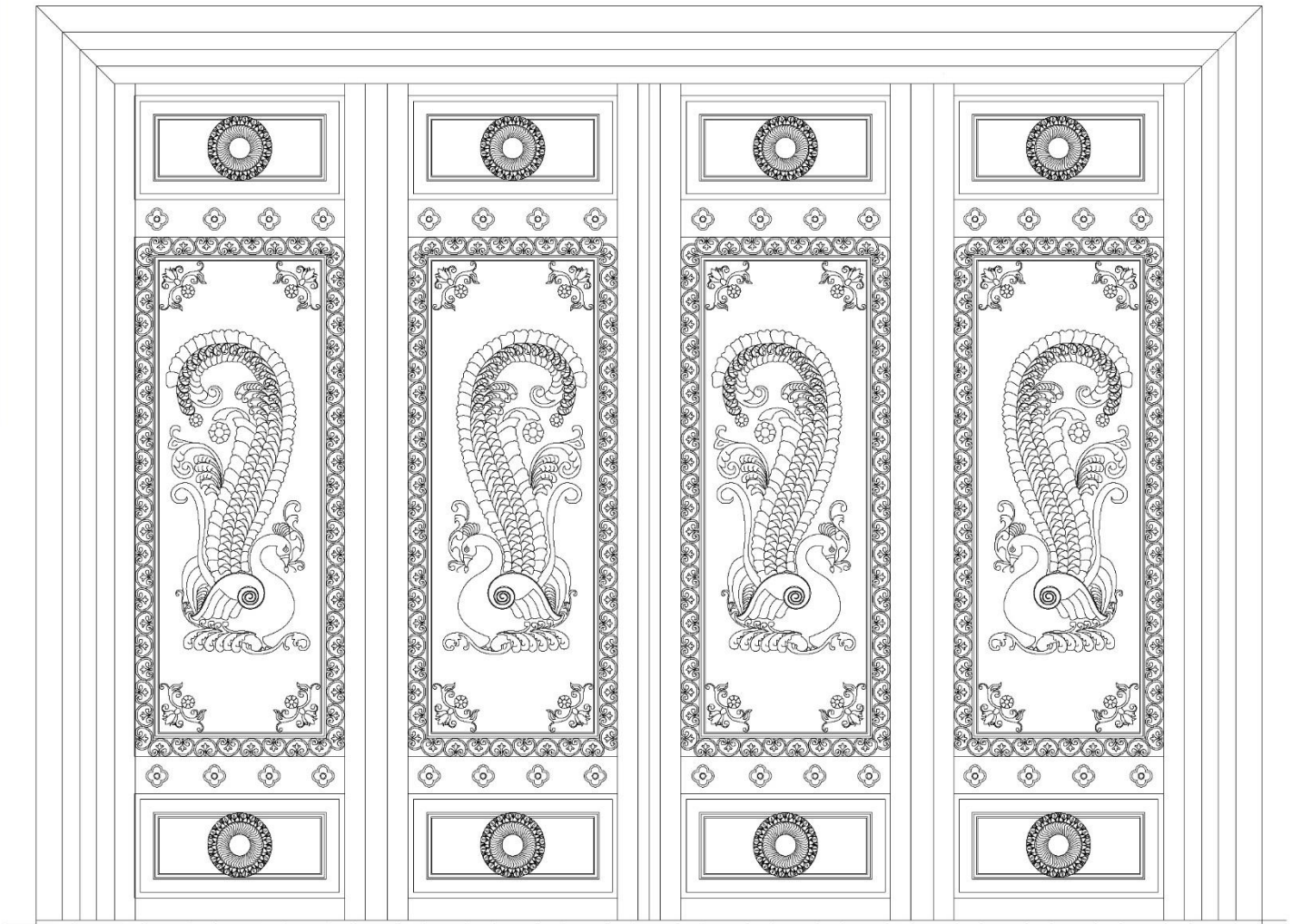
ARTIST'S IMPRESSIONS



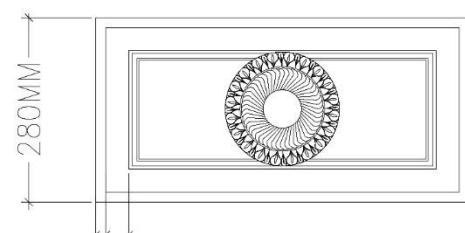
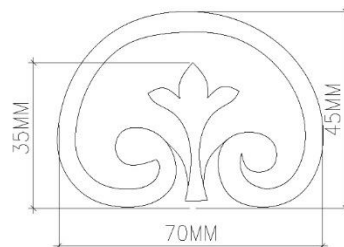
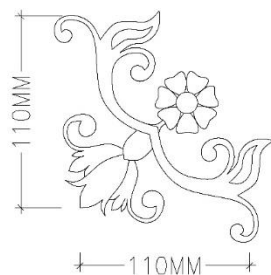
DRAWINGS FROM ARCHITECT

ORNAMENTAL DOORS

TEMPLE FLOOR DOOR



DETAILS



MATERIALS USED



Teak Wood



Marble Cladding



ARCHITECT OF THE WEEK

HRISHIKESH VAZE

DESIGN DEVELOPMENT ARCHITECT

QUALIFICATION

Bachelor of Architecture,
University Of Pune .
Regd. Council Of
Architecture, New Delhi.
Regd. IIIA New Delhi.

INTERESTS AND ACHIEVEMENTS

- Architectural Practice. **Astu Architects Pune.**
- The Aim of **Human responsive Architecture** is attaining optimum human comfort closest to its natural habitat in least fabrication of resources.
- Practice in: Industrial Architecture, Commercial Architecture, Residential Architecture, Senior Citizen Housing.

EXPERIENCE WITH THE TOVP

Designing and detailing interior areas of the temple is an interesting task. The doors and windows detailing of marginally grand but elegant opening require many materials to be tweaked in order to get one of its kind structure. Preparing the estimated quantities and tender drawings is also undertaken to along with TOVP Design Dept on site team.

'Working for an unusually scaled structure is not an everyday job; it's for centuries to come. Moreover being a fraction of a great design and execution team is a rare fortune.'

CONTRIBUTIONS TO THE TOVP

Hrishikesh has a fine eye for aesthetics and detailing . His active input on the ToVP Design Team in fenestration design and details, selection of appropriate materials and quantifying the gamut of elements in the building.