



A VISIT TO MAYAPUR

PREPARED BY
TOVP ARCHITECTURE DEPT.
Pune

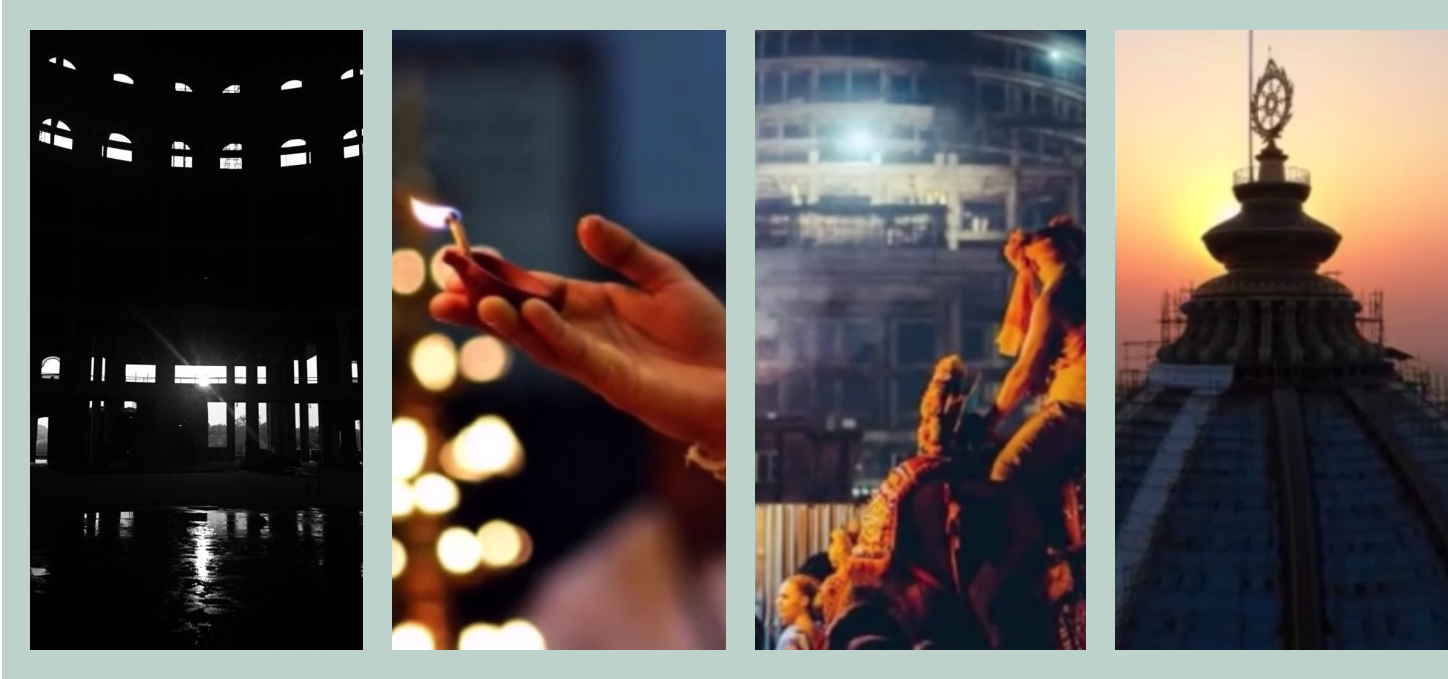
NOVEMBER 2019

 **PRESENTED BY**
TOVP ARCHITECTURE DEPARTMENT, PUNE

DATED FOR
25.11.2019

AN ODE TO THE TOVP

THE ESSENCE, MAKE AND VIBE!!



Tovp architecture and construction department presents to you,

The Essence of Providing Meaning to all Forms.

Architecture has evolved in a very eloquent pattern, rooting from its very first habitat. ToVP is a type of habitat with its element of extravagance. On its unruffled forehead of walls, are joyful and large openings. A shelter that provides Sharanagati. On an individual level, on a collective level.

While the space is lending function, it also begins to form a statement. Numerous geometric shapes border an innovative perception. A bold statement of culture, of process. A house, where movement meets stillness. All of this, eventually connecting – people, ideas, process...and this connections we call – Architecture.

Whilst the Meditating, discussing, convening and planning, we proclaim your motionless dance!!!

FROM THE HEAD ARCHITECT


"The shower of affection and empowerment from our beloved chairman, Alfred Ford (Ambarisa Prabhu), is a refreshing inspiration in the marathon of this iconic building.

The theatric experience of space within this splendid structure; reverberates the experience behind its actual design and construction process. The transformation of vision into paper, and now paper to reality has embedded layers of memories, impressions, and deep learnings.

The final sprint of a marathon is most defining. While the team is geared up for the last lap, we are equally very conscious that the planes where 2 materials meet, go uncompromised.....details thus speaking the language of elegance, of information and of quality –

A home of the Lords!"

*Ar.Varsha Sharma
(Vilasini dd)*



**'THE WHOLE IS
OTHER THAN THE
SUM OF THE PARTS.'
– KURT KOFFKA**

OVERVIEW



The visit of the chairman Ambarisa Das (Alfred Ford) in November marked to be an important highlight in the series of gatherings for the ToVP this year. A lot of aspects- technical as well as managerial were covered.

The areas of work were presented live as we walked Ambarisa Prabhu through the construction site. Highlighted areas were the interiors of Pujari floor and Temple floor, The art work done on the lines of elephants, murals, demi gods, Jay Vijay, Garuda etc.

The construction work of the Chatri level its floor finishes and railing designs got covered. And leading to the top were the dome tiers and volutes.

FOCUS

BEHIND THE VISIT



ARTWORK



ELEPHANTS



MURALS



DEMIGODS



JAY VIJAY



**CHATRI
INTERIORS**



**TEMPLE
FLOOR**



**PUJARI FLOOR
INTERIORS**

HIGHLIGHTS

PRESENTATIONS AND REPORTS

IN THE SUCCESSFUL ORGANIZATION, NO DETAIL IS TOO SMALL TO ESCAPE CLOSE ATTENTION.

ACOUSTICS

- Phase 1 and phase 2 are now separated
- Phase one to commence.
- Phase 2 will commence post completion of phase 1



LANDSCAPE

- Further meetings to be held to help bring the landscape team in speed with the following teams -
 1. MEP
 2. Master Plan
 3. Mayapur team,



IN THE SPOTLIGHT

THE ROOTS OF TRUE
ACHIEVEMENT LIE IN THE WILL TO
BECOME THE BEST THAT YOU CAN
BECOME.



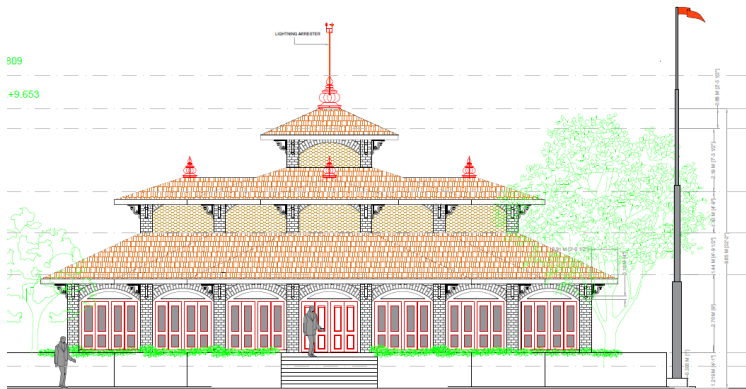
ARCHITECTURAL
DRAWINGS
EFFECTUATED



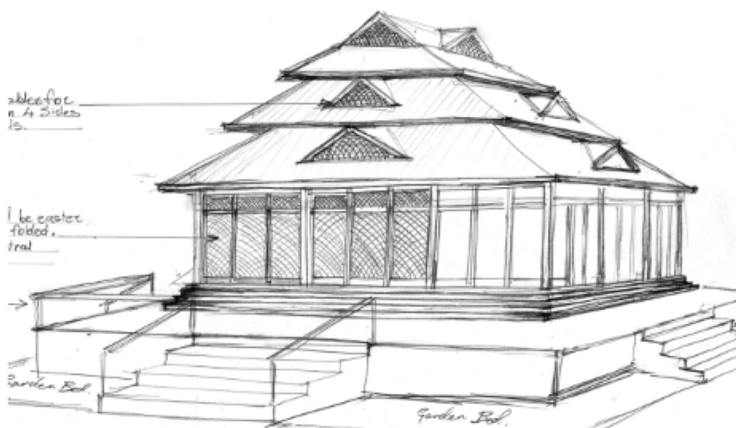
UPCOMING PUJARI
FLOOR GRAND
OPENING

THE YAJNA SHELTER

IN DISCUSSION WITH
GURUKUL MAHARAJ



Architectural drawing



The Artist's impression



PRESENTATIONS

1. ARCHITECTURAL OVERVIEW

- Stages of work
- Stages of drawings
- Interior works drawings and execution
- Exterior works drawings and execution
- Landscape drawings and execution

<https://www.canva.com/design/DADnBreRhHM/uswRBGB6Gyg6PZj7FjsaeA/edit>



2. UPCOMING ARCHETYPE

- Upcoming Mock ups
- Drawings completed
- Material selection and conclusions
- Budget savings
- In house production

<https://www.canva.com/design/DADnxUzhj7w/cbWuGue87B3fH29KkrJRbw/edit>



3. FINANCIAL FORECAST

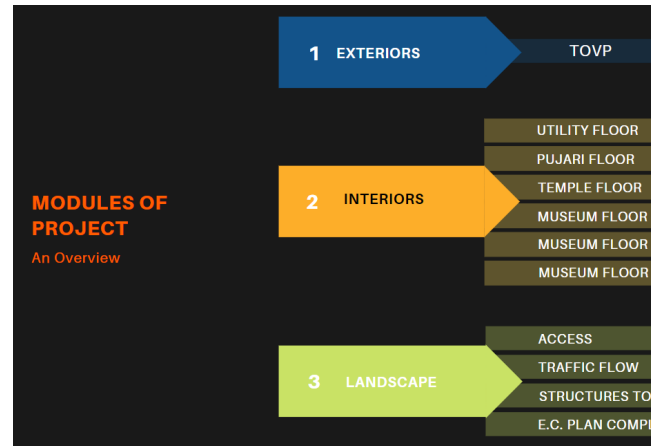
- Completion status
- Additional budget
- Current budgets
- Balance
- Execution- completed and upcoming



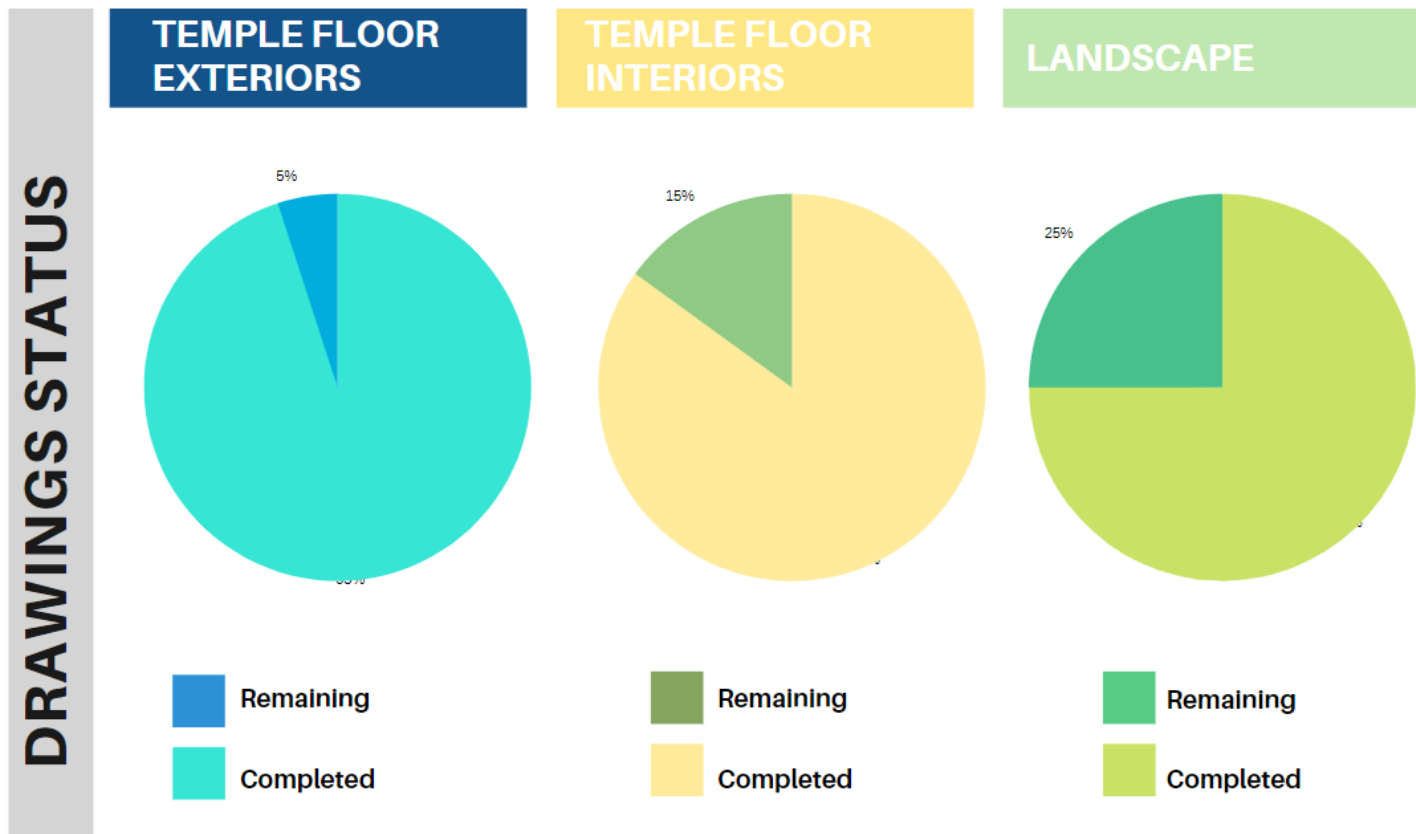
1. OVERVIEW

ARCHITECTURAL OVERVIEW

- Stages of work
- Stages of drawings
- Interior works drawings and execution
- Exterior works drawings and execution
- Landscape drawings and execution



<https://www.canva.com/design/DADnBreRhHM/uswRBGB6Gyg6PZj7FjsaeA/edit>



2. UPCOMING ARCHTYPES

UPCOMING ARCHETYPE

- Upcoming Mock ups
- Drawings completed
- Material selection and conclusions
- Budget savings
- In house production

<https://www.canva.com/design/DADnxUzhj7w/cbWuGue87B3fH29KkrJRbw/edit>



Consolidated list of mock-ups

1. Oval windows	
2. Kalash windows	
3. Altar domes	
4. Chandelier	
5. Yajna shelter	
6. Demigods & base design	
7. Staircase jaali	
8. Peacock railing	
9. Prabhupad Vyasasana	
10. SP bridge	
11. Columns	

9. Prabhupada Vyasasana

LOCATION & REPRESENTATION

Architectural drawing

Location on site

The conceptual render of Prabhupada Vyasasana

9. ARCHETYPE

The Artist's impression

+

Mukhya of Sthapatis

=

Contractors

=

MONEY SAVING!

10. SP Bridge

LOCATION & REPRESENTATION

Architectural drawing

Location on site

The conceptual render of Prabhupada Vyasasana

10. ARCHETYPE

The Artist's impression

+

Sp Bridge railings

=

Sp Bridge railings checking on site

3. FINANCIAL FORECAST

FINANCIAL FORECAST

- Completion status
- Additional budget
- Current budgets
- Balance
- Execution- completed and upcoming

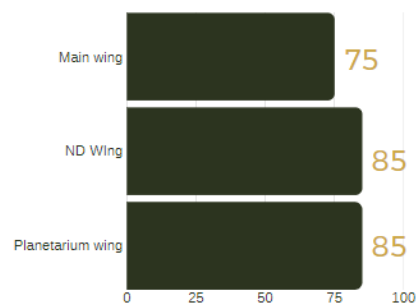
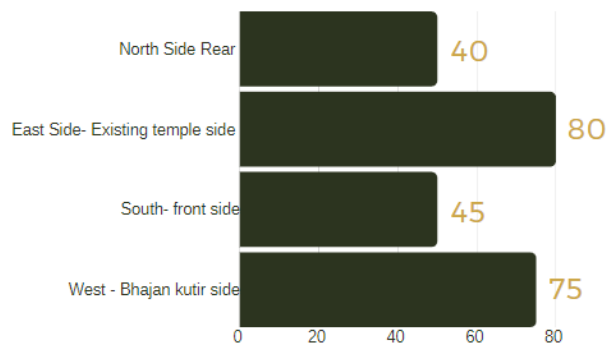
FINANCIAL FORECAST FOR THE TOVP

— An overview

% COMPLETION

FACADE

KALASH, DOME WITH TIERS



IN CONVERSATION

1. What are your impressions from your recent visit to Mayapur?

I was very happy about the level of progress and cooperation between different elements of the TOVP community. Sadbhuja and his team have done phenomenal work over the years creating a monumental structure of beauty, and Cushman Wakefield has been effective and productive to bring this massive building up to code and fill in the strategic infrastructure of the entire project.

2. What do you feel about the progress in work so far?

As I said, very amazing progress. The entire team is focused to get our beloved deities moved to their new home by 2022.

3. What has your inspiration behind all the support you're offering to this project?

I only have one inspiration and that is Srila Prabhupada. He asked me to help with funding many years ago. After all, he went through to establish ISKCON in the West, it is our obligation and duty to serve him with love to open this temple, which was his foremost desire during the last years of his time with us.



**AMBARISA DAS
(ALFRED FORD)**

ABOUT THE CHAIRMAN

Alfred Ford, is an American heir to the Ford fortune.

He is a great-grandson of Henry Ford, founder of the Ford Motor Company.

IN CONVERSATION

4. You have seen this project grow through all the years of its progress. What has your perception been in its development?

To me, it has been an amazing achievement. Starting with a dusty hole in the ground, and building up from the pilings to the chakras. I have been astounded as have devotees from around the world.

5. What message would you let out to the world through the ToVP?

Come to Mayapur for the condensed mercy of Chaitanya Mahaprabhu and spread the chanting of Hare Krishna and the glories of Srila Prabhupada far and wide.



**AMBARISA DAS
(ALFRED FORD)**

ABOUT THE CHAIRMAN

Srila Prabhupada entrusted Ambarisa Prabhu (Alfred Ford) with the instruction of financing his pinnacle project, the Temple of the Vedic Planetarium – an icon for the World Headquarters of ISKCON. Being the chairman, he has not just fulfilled his role on an advisory level, but has deeply touched hearts of the TOVP family at the grassroot levels.