



PUNE ARCHITECTURE OFFICE

PICKING UP THE MOMENTUM



July // 2021

TABLE OF CONTENTS

01. From the Head Architect's Desk

02. Introduction

03. List of Works

04. The Crux

05. Status of Works

06. Summary

07. Conclusion

FROM THE HEAD ARCHITECT'S DESK



The construction industry experienced varying degrees of impacts as a result of the COVID-19 pandemic. The nature of the impacts and extent of the ramifications are in large part dependent upon the location of both the respective businesses and underlying projects.

With our site based in India, the country experienced a massive 2nd wave hit in the coming year and a major impact in 2022 as well.

Keeping the ever changing scenarios in mind, the architecture team extensively worked on all design and construction drawings during the complete lockdowns to enable time optimization post lockdown. As the drawings are rapidly on their way of completion, we have a clear vision for execution and smoother delivery.

Following is an overview of the drawings and tasks in and, along with the process of execution.

INTRODUCTION



The COVID-19 pandemic has plunged many global industries into one of the most challenging times in their history. As we got introduced to lockdowns- twice in the span of one year, and other restrictions, the pace of change for construction has been extreme, forcing us to change our ways of working overnight.

Technology has made design, collaboration and communication more accessible and smoother that has helped the teams consulting and designing for the ToVP to stay connected and in correspondence with each other.

After months in the country, the gradual opening of the lockdown led to various opportunities for architectural and construction works. At the ToVP, we could open up various site activities on the architects' design drawings during the lockdown.

Following is the process of working and the works that were accomplished during the lockdown, taking us closer towards our grand opening.

LIST OF WORKS

01. Staircase towers- Interiors

02. Staircase towers- Exteriors

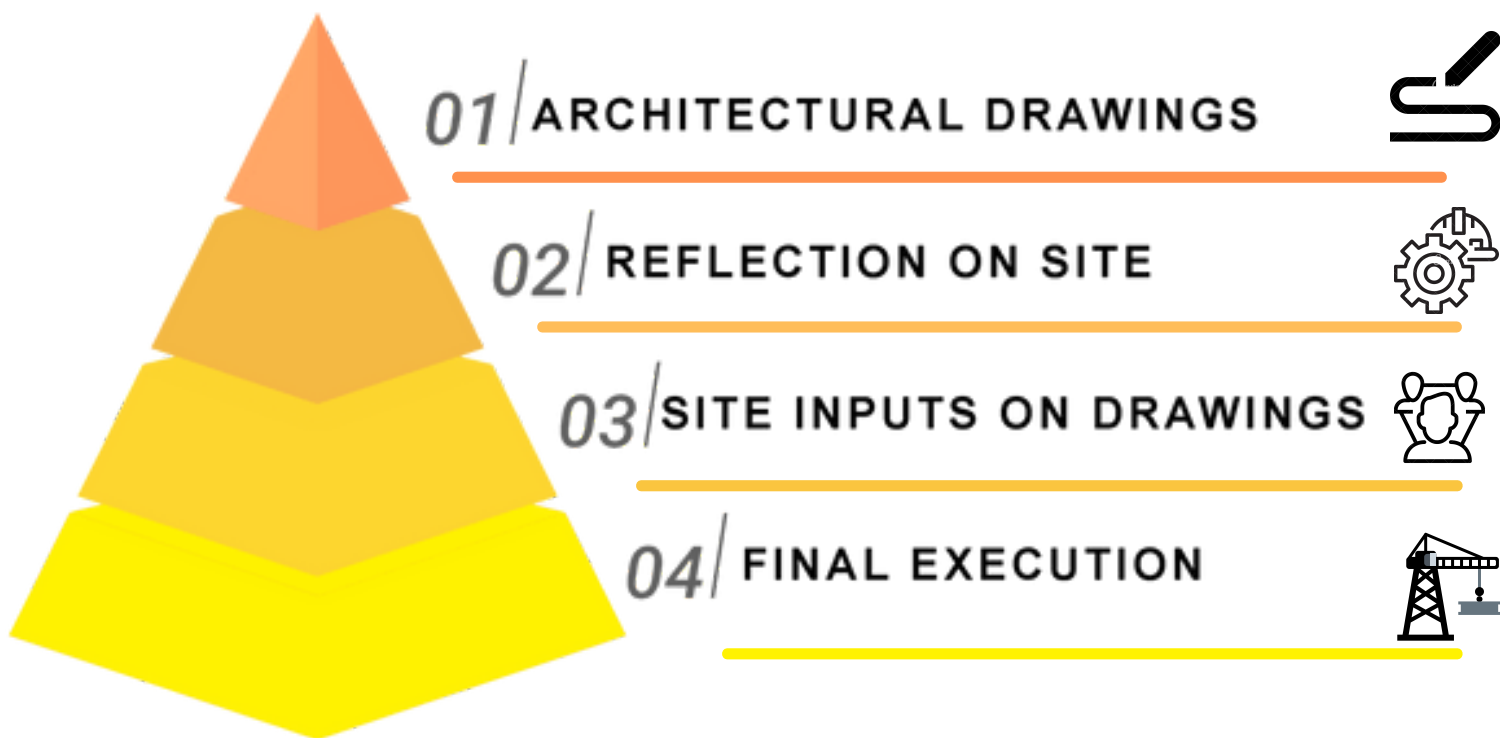
03. Jali Narations

04. Entrance Columns

ACHIEVING ACCURACY

Creating a building is a long process. Breaking down an architecture project into design phases helps you organize your project into more manageable steps.

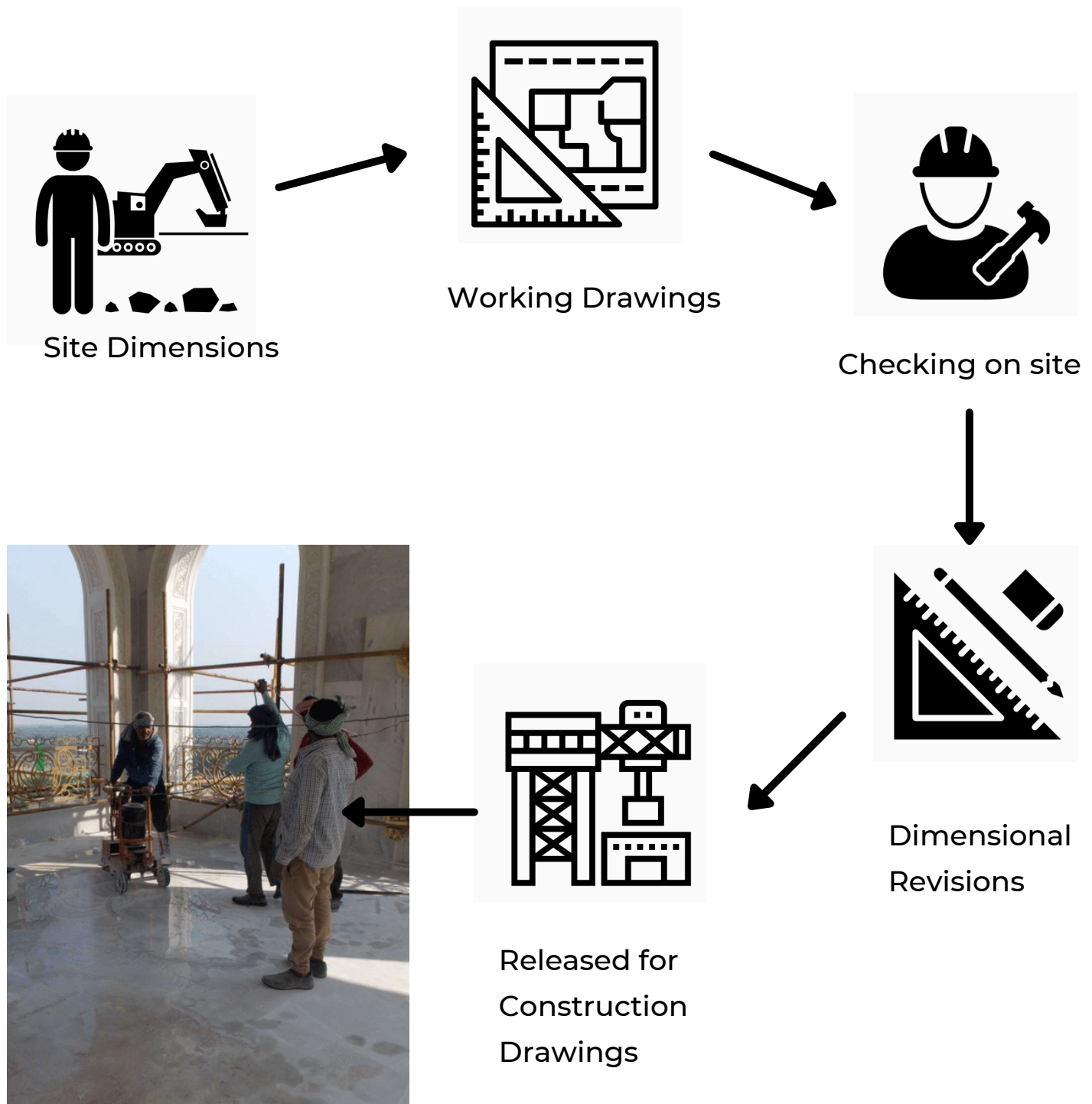
Architectural design is a thorough and systematic evaluation of the corresponding values, goals, facts, and needs of the building and the surroundings as well. A well-conceived process leads to high-quality design.



A great building must begin with the immeasurable, must go through measurable means when it is being designed, and in the end must be unmeasured.

ACHIEVING ACCURACY

The crux of the aesthetic ToVP lies in the Vision of Srila Prabhupada, manifested in the dynamic nature of our site and drawings. The amalgamation of the unusual location of the site and the first of its kind architecture gives the ToVP the character that it possesses after years of research, development and communication.



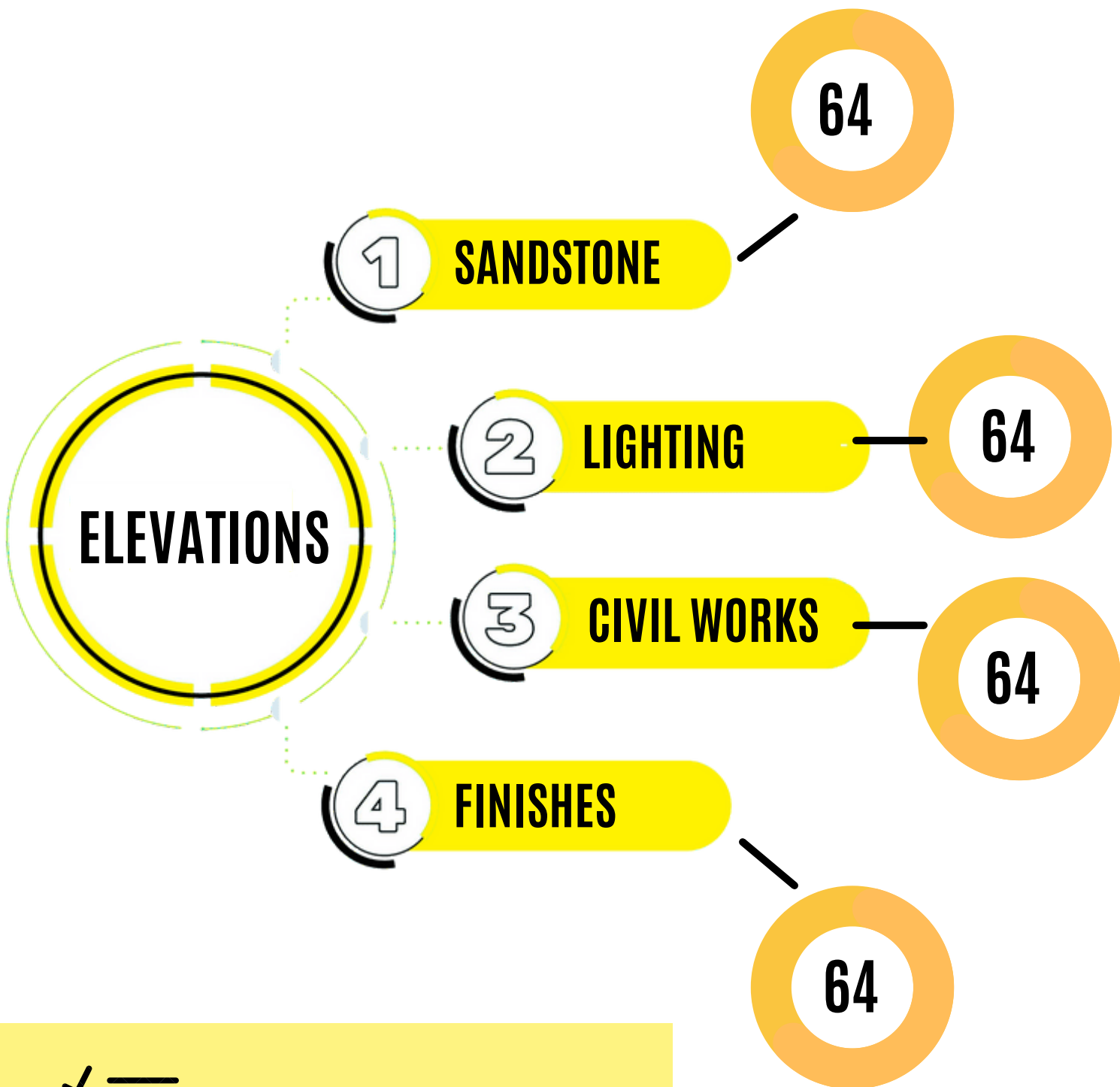
STAIRCASE TOWERS-EXTERIORS

The focus of work for the interiors of the staircase towers is more on civil works. Lift lobbies, flooring, walls are all being simultaneously worked upon. Through the second lockdown, the architecture team completed all the design and working drawings needed for construction, and as the lockdown eased a little, the work on site has commenced.



STAIRCASE TOWERS-EXTERIORS

NUMBER OF DRAWINGS

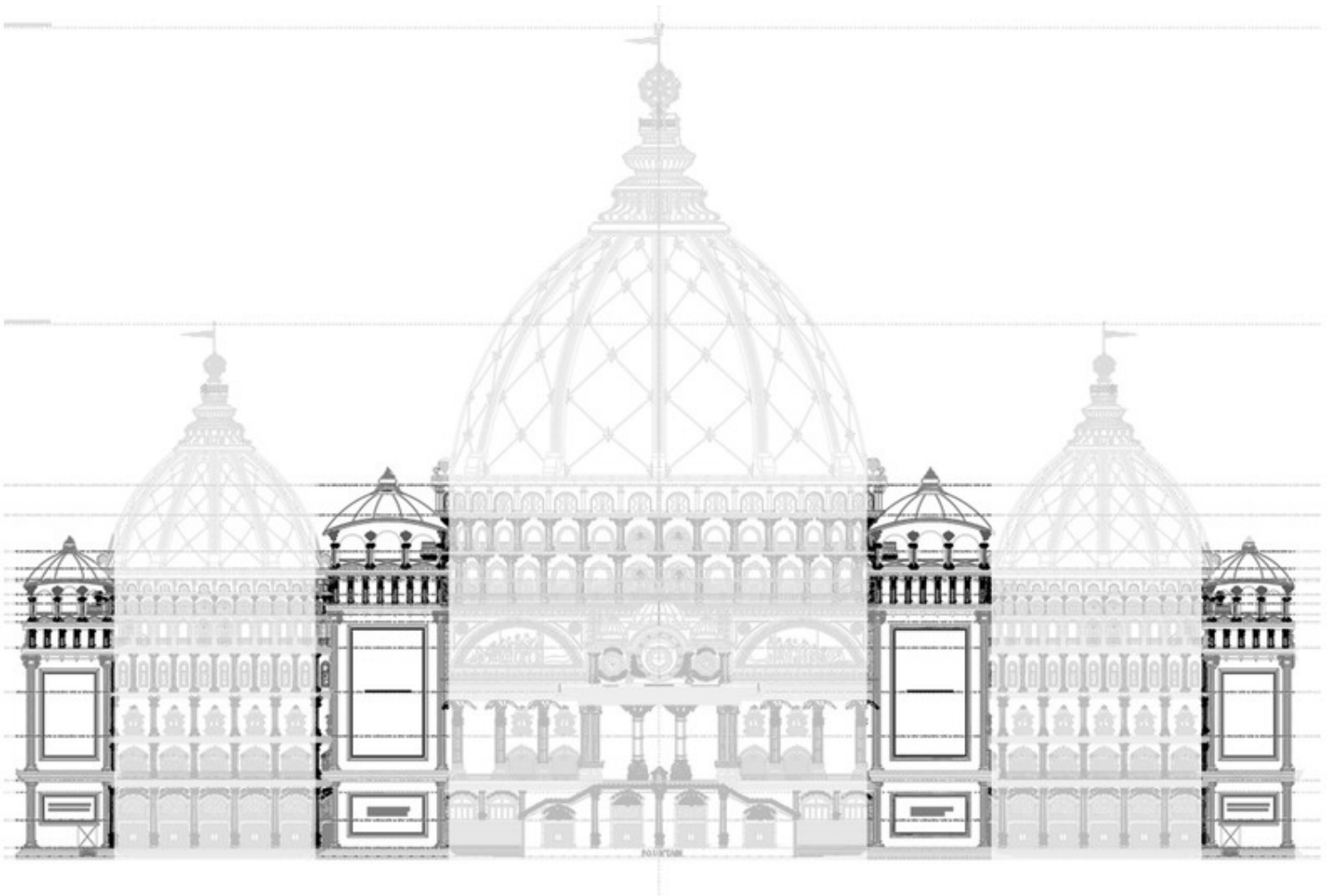


DRAWINGS-256 NOS.

STAIRCASE TOWERS-EXTERIORS

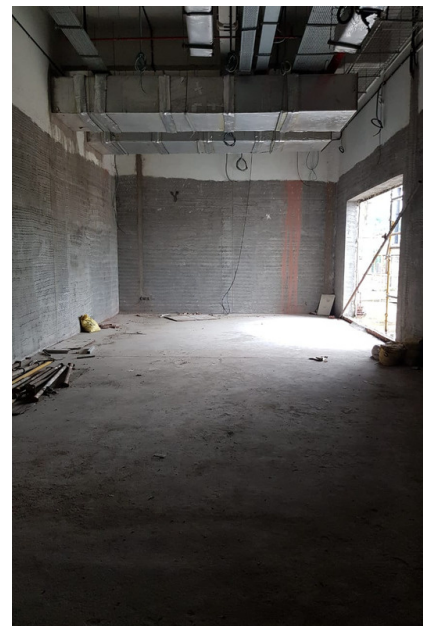
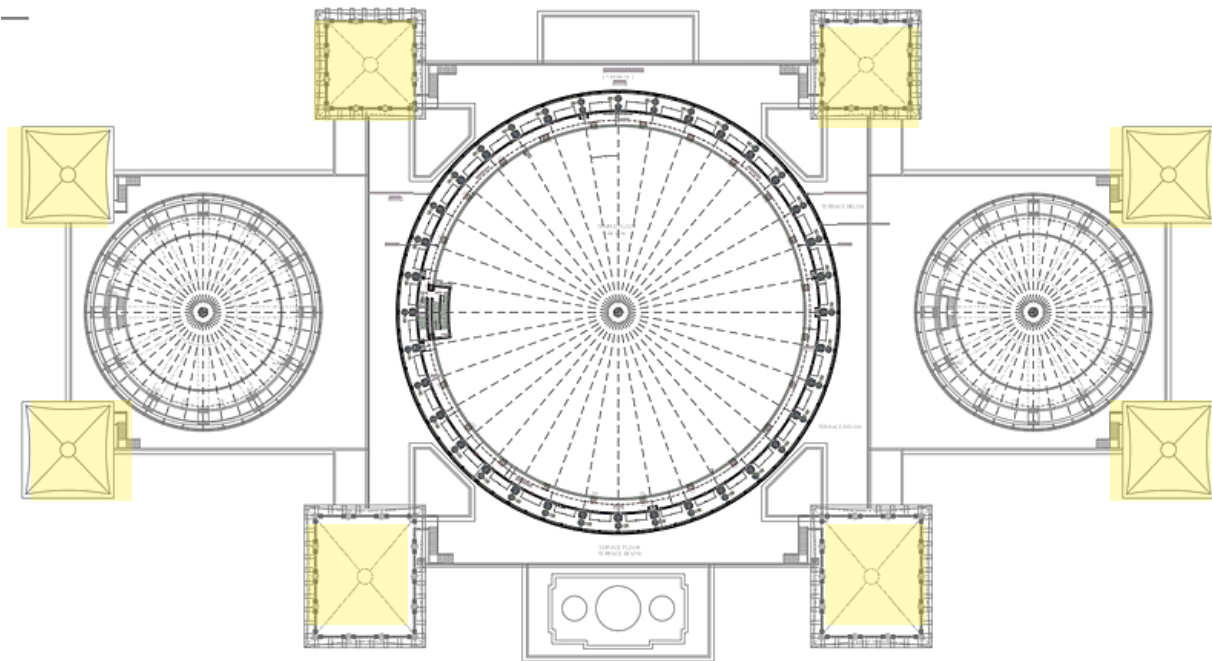
The staircase towers are the circulation hubs of the building. They are the vertical spine connected to the significant floors of the temple and the parikrama path that circumambulated the building.

As each wing has its own identity, the ornamentation and jail work are unique to the wings' theme. The overall exterior design, however, binds these elements into making the spine of the building look one.

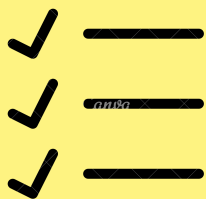
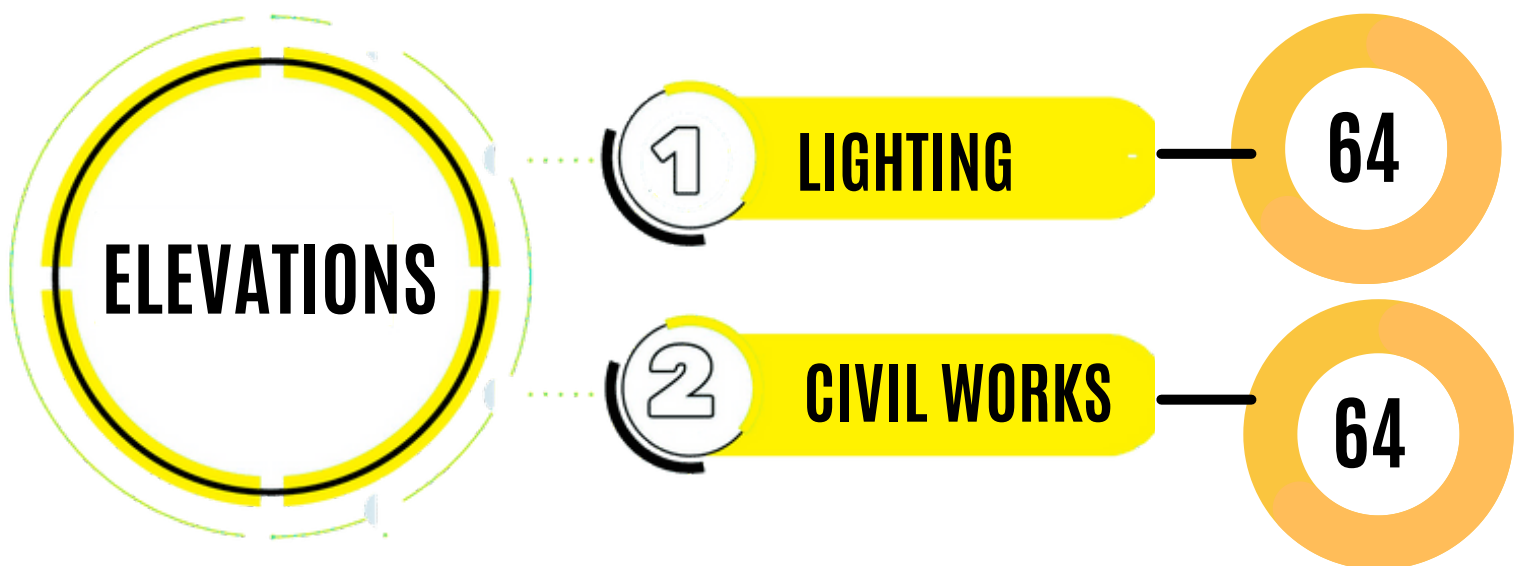


STAIRCASE TOWERS-INTERIORS

The Staircase towers are a blend of works and designs comprising of civil works to finishing works. The design process for wall cladding and floor design is ongoing.



STAIRCASE TOWERS-INTERIORS DRAWINGS

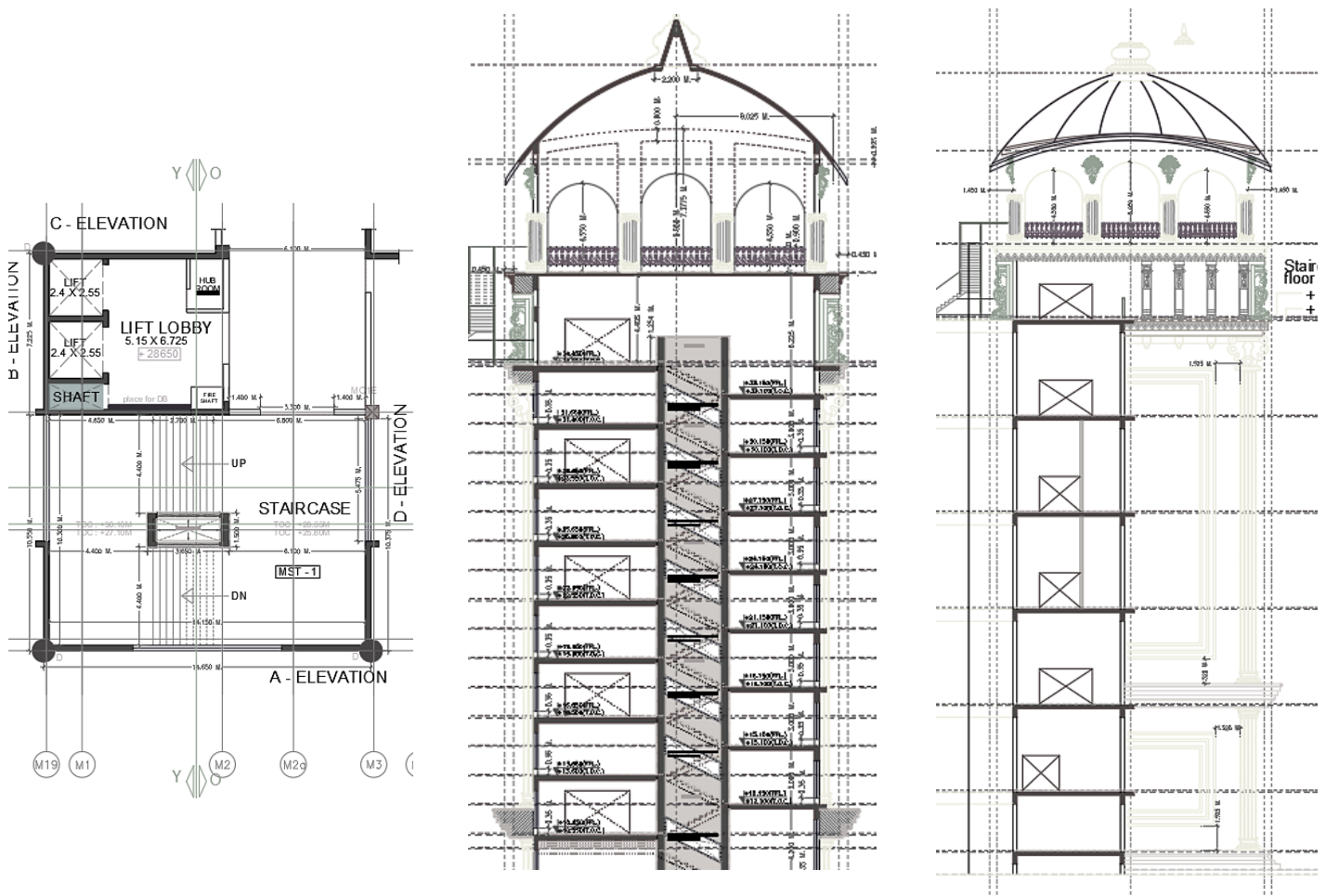


DRAWINGS-128 NOS.

STAIRCASE TOWERS-INTERIORS

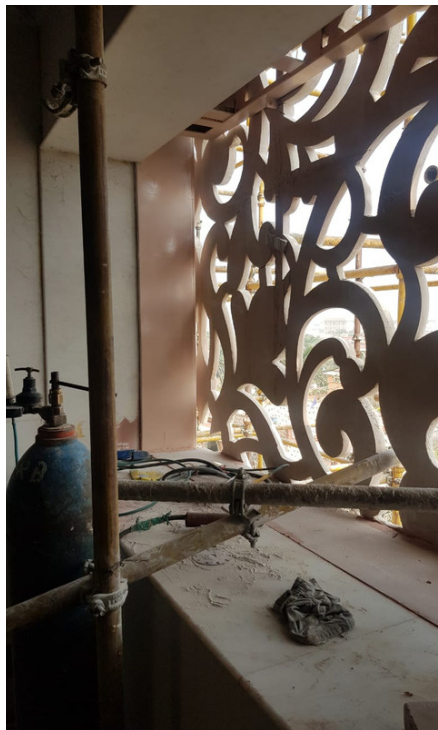
Work on the NST is in full force. The material procurement and installation process have begun. While the staircase towers are an essential element of the building, they are among the most challenging aspects of visual symmetry and appeal.

The lighting work of the towers amidst the jalis is a process of delicacy to maintain the aesthetic of the jail carving while making space to fit the light fixture.



JALI NARRATIONS

The jalis of the building are a very intricate and thoughtfully designed element, keeping in mind the various services that go with it. Along with being an aesthetic element, these jalis also have to encompass services such as light fixtures that have to be curated to fit the designated lights.



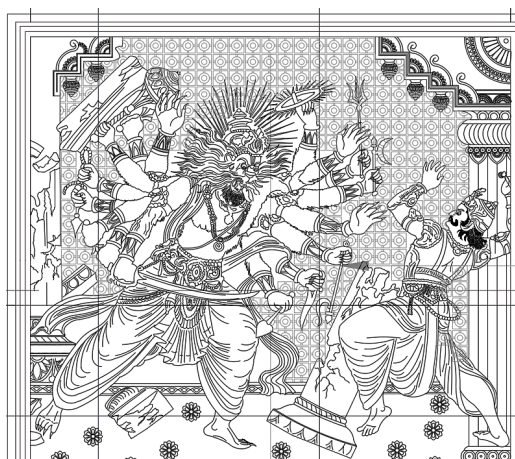
Every corner of the building is designed with artistic renditions as a reminder of our meditation on the Supreme Lord. Beautiful and subtle leelas carved in sandstone along the exterior parikrama path are a continuous background following a devotee as he circumambulates the building. Every turn that the path takes, has a different carving and depictions according to the Gods in the wings.

JALI NARRATIONS

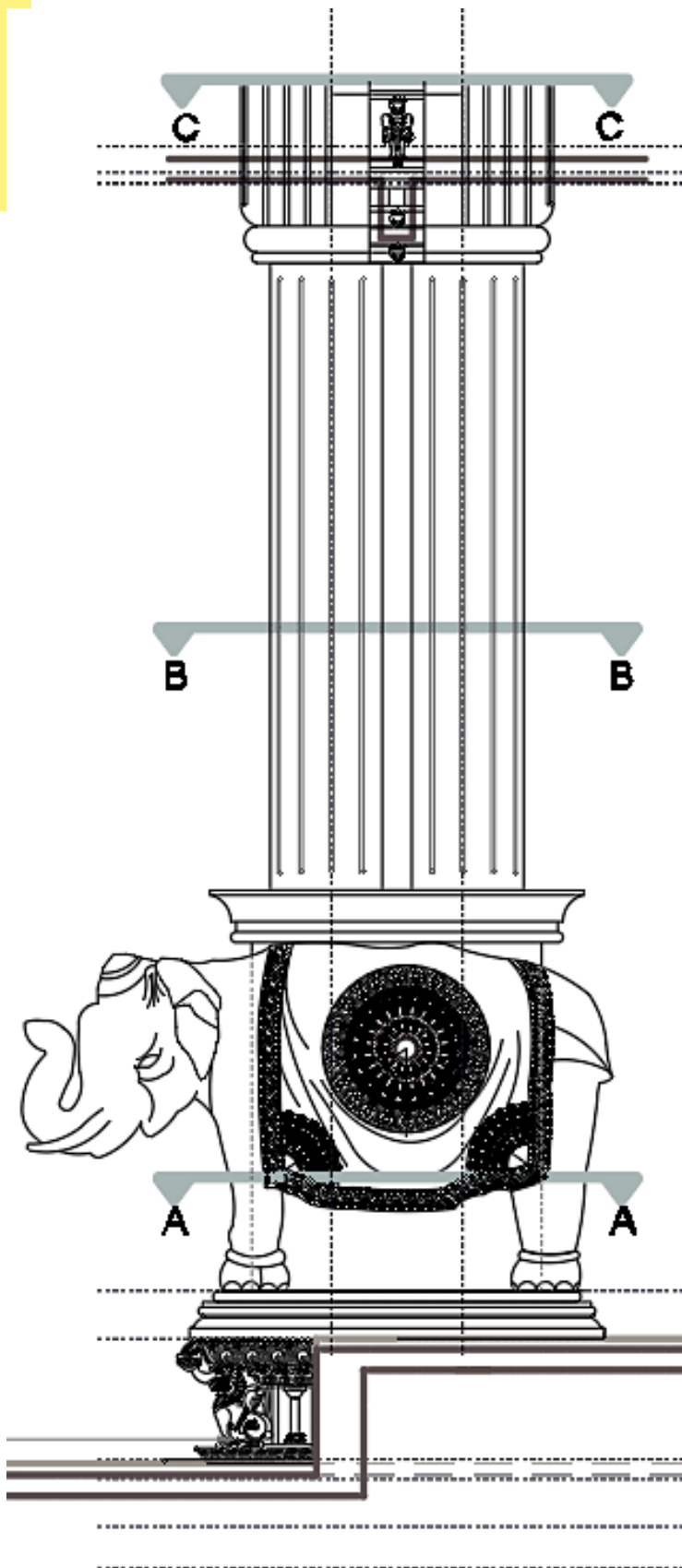
The Jali works for the staircase towers on the side facades are a themed combination of Krishna Leelas, Narsimhadev and Pralhad illustrations, and various other elements from the Scriptures.



DRAWINGS



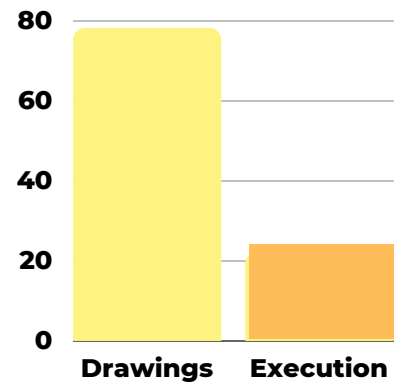
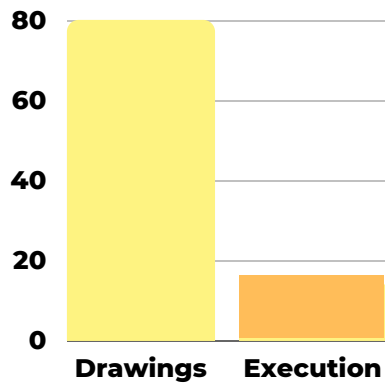
ELEPHANT COLUMNS



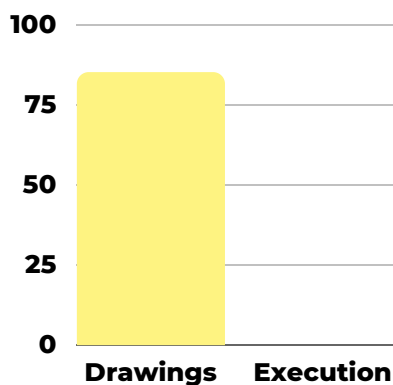
Entering the temple is a manifestation of the deity inside for the devotee. His mind focuses on the deity inside and he too becomes a part of the architecture and he stands to pay obeisance to the deities.

The themes of the columns are designed keeping in mind auspicious elements that add to the positivity for an entrance. Elephant trunks are propitious and having these at the entrance along with various other elements makes the entrance and the threshold a mark to the start of the grandees and positive vibrancy that the insides of the temple have to offer.

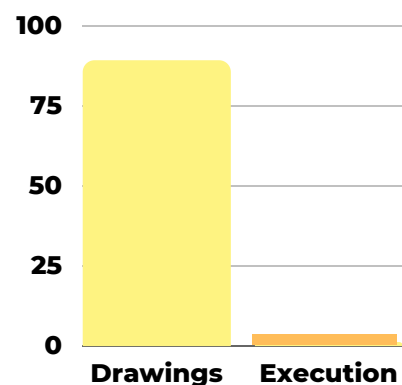
SUMMARY OF WORKS



Staircase Exteriors



Staircase Interiors



Jali Narrations

Elephant Columns

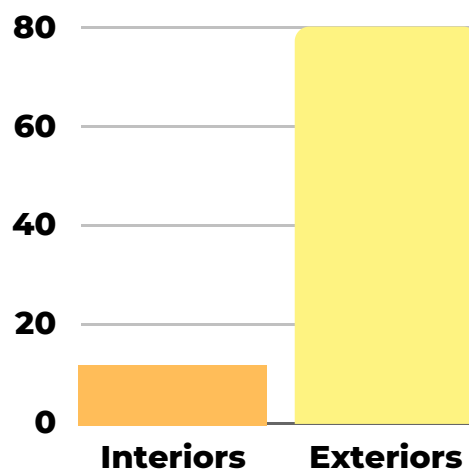
“Individual commitment to a group effort-that is what makes a team work, a company work, a society work, a civilization work.”



The lockdown allowed us to work thoroughly on the architectural and working drawings making it easier to optimise time for construction and execution with the ease of lockdown rules. The work on site is now in full swing as every team member works meticulously towards design and execution.

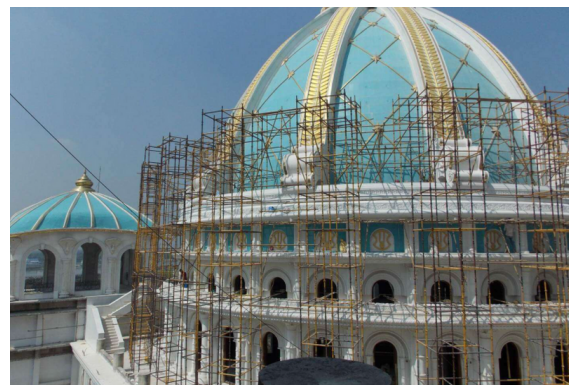
SUMMARY OF WORKS

Here is a outline of the branches of works undertaken



The pandemic hitting the world and the lockdowns that followed right after, twice in the span of a year led to a drastic change in the process, flow and pace of working. The design process and approach of the TOVP is unique to themselves. It consists of a step by step evaluation of the concept, design, working drawings and then execution.

“Individual commitment to a group effort-that is what makes a team work, a company work, a society work, a civilization work.”



NEXT STEPS

The lockdown allowed us to work thoroughly on the architectural and working drawings making it easier to optimise time for construction and execution with the ease of lockdown rules. The work on site is now in full swing as every team member works meticulously towards design and execution.



01. SCREEDING

02. LIGHT FIXTURES NST JALI- MOCK UP

03. LIFT LOBBIES CLADDING

04. CHANDELIERS