

March 2022

# 739 DAYS TILL D-DAY



**Temple of Vedic Planetarium**

An Update on Architecture and Construction

# MESSAGE FROM THE HEAD ARCHITECT

The real taste comes in the next bite! When an Architectural Drawing is complete, there is still more to chew on it. As building materials physically settle and adjust themselves in their newly designated space, there are always elbows of spaces that need reorganization until the conclusion of human interference - when the entire building puzzle is well packed together.

This is an intensive time of re-structure and revisiting the drawings to adjust those elbows...And owing to the long lasting relationship of the designers and the building, the most beautiful realistic patterns are formed during this process...

*In the journey there have been many milestones achieved through ups and downs, and it is the choices that we made at each of those times that have helped shape what we have achieved.*

Varsha Sharma  
Vilasini dd



# INTRODUCTION

The ToVP was a vision laid out by Srila Parbhupada, following which a series of events later, in 2009, the first pile of was sunk. Over the years people from various professions and interest have been working on the ToVP.

The ToVP writes a story, a story with detailed narratives that walk through the user journey, step by step but annotated with context, motivation and expectation. This extra step in design helped us to more quickly and effectively to create truly unique and delightful user experiences.

No one knew in the start of the project the hurdles that would cross its way. But now, as we walk towards its completion what stands out the most is the achievements that came through thick and thin. Taking you through the items of work, that are actively going on on-site and on our drafting boards!



# TABLE OF CONTENTS

- 01** Reflected Floor Plans  
Typical Section  
Process
- 02** Main and Side Dome Tier Windows
- 03** Utility Building-Elevation Study
- 04** Balustrade Design
- 05** Rear Canopy
- 06** SP Bridge
- 07** Elephant Columns
- 08** Other Items to Commence Soon
- 08** Conclusion

# HIGHLIGHTS

The COVID-19 pandemic has plunged many global industries into one of the most challenging times in their history. However, even through that, the work on the TOVP did not take a set back. With the rules easing down, we are actively working to open the gates of the grand temple to the people. Here are some major highlights of work.

1

## Reflected Ceiling Plans

The reflected ceiling plans are very ornate and intricate works that involve multiple interdependences. It is a process that involves layers of changes on various fronts.

2

## Grand Staircase

For added comfort of the pilgrims, the tread sizes are proposed to increase. Post that, the team is now in the process of designing flooring for the same. Apart fro that we are now going through to check accuracy in dimensions for construction on site

3

## Tier Doors and Windows

The major change in design for the window came with the change in drawing from the frame dimensions. It is now in its way of completion.

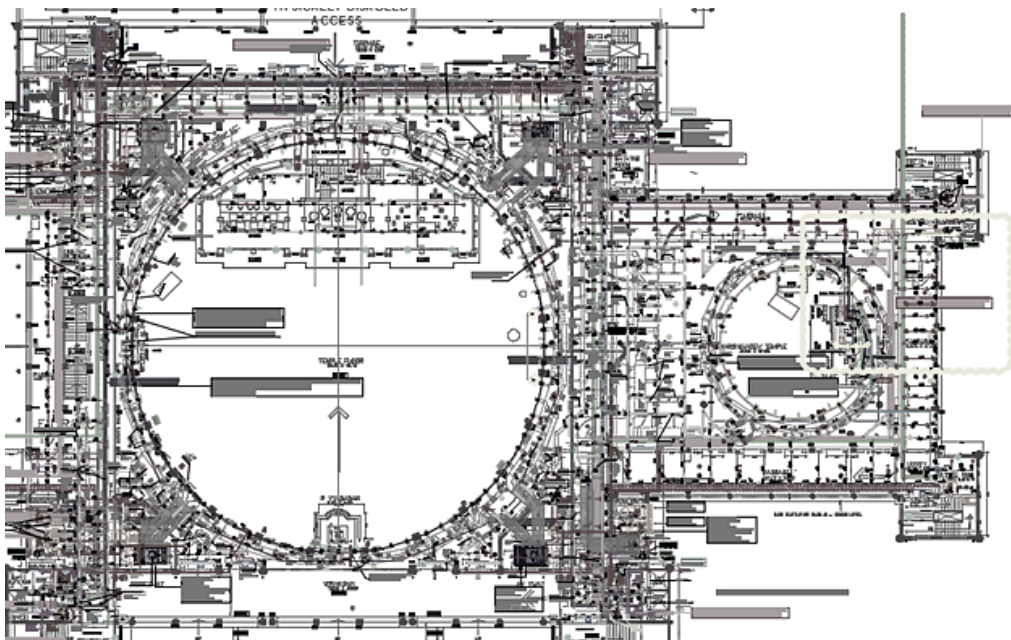
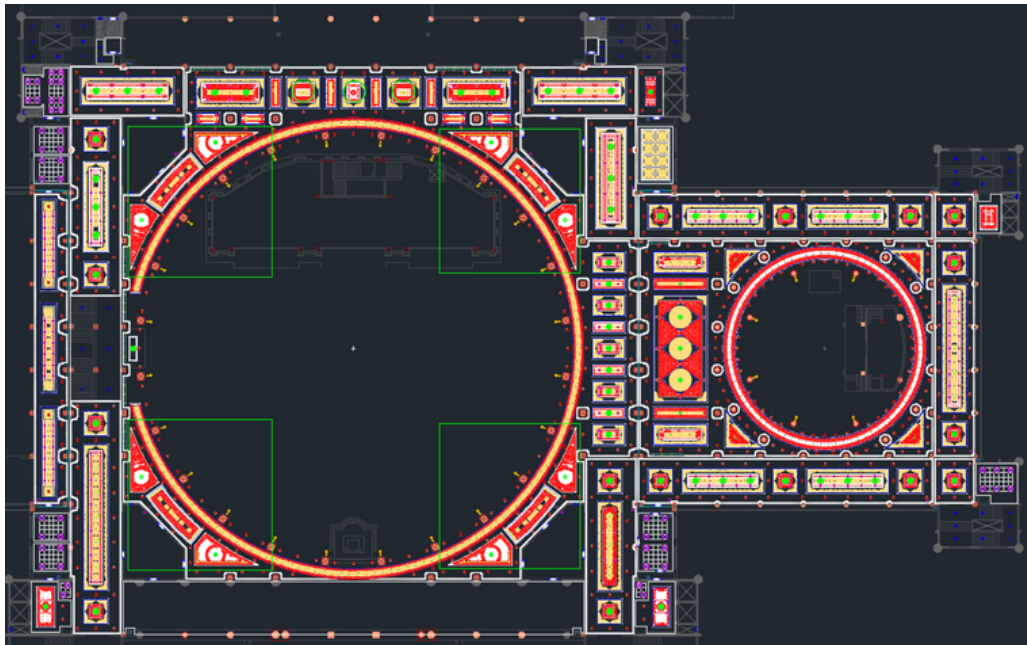
# ONGOING WORKS



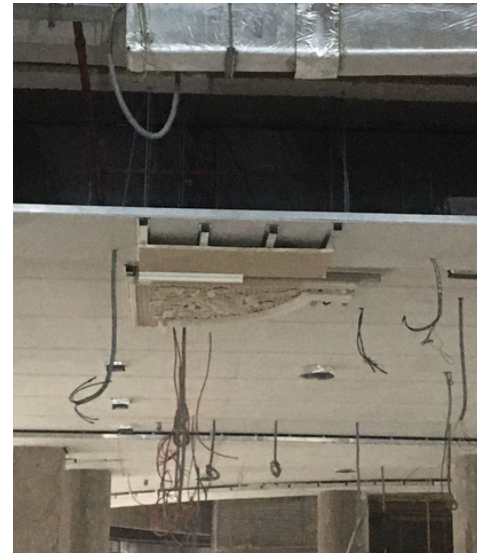
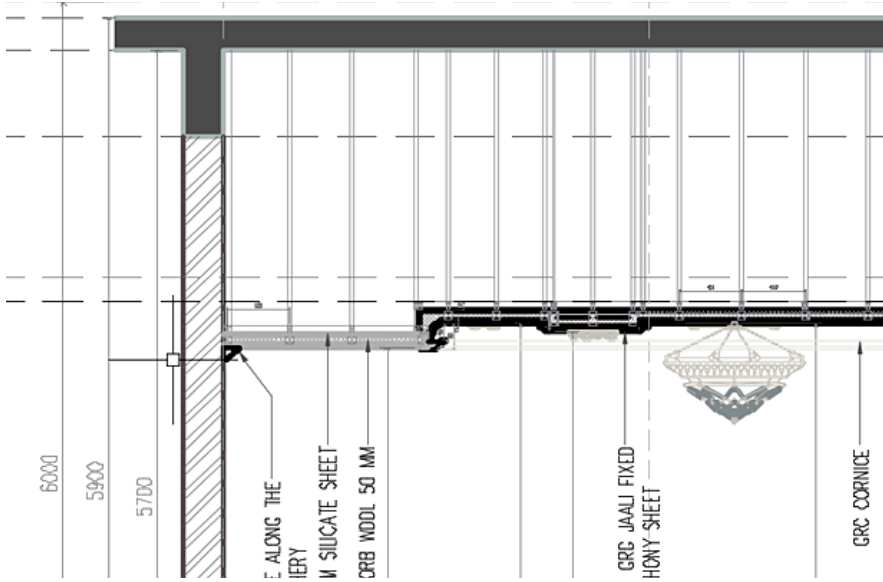
# REFLECTED CEILING PLANS-ONGOING

All the services that are involved in designing the temple floor are camouflaged into this ceiling. Hence the appearance of even the smallest of a light fitting is selected with extreme curation from the vendors in order to match the design.

The crux of all the RCP designs and planning lies in blending the legions of services that go past the ceiling. The design that is now finalized is a delicate and careful blend of both These serve as a working framework throughout the actual construction process.



# TYPICAL SECTION



- ← 200mm Slab
- ← Calcium Silicate
- ← Absorb Wool





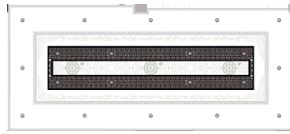
# PROCESS

Each Module in the Reflected Ceiling Plan is designed taking in consideration the structural works laid on the temple floor. Thus the design varies in size, shape and pattern yet keeps the integrity in place.

1

Level one

## Calcium Silicate Board



2

Level two

## Light Fixture and Perforations



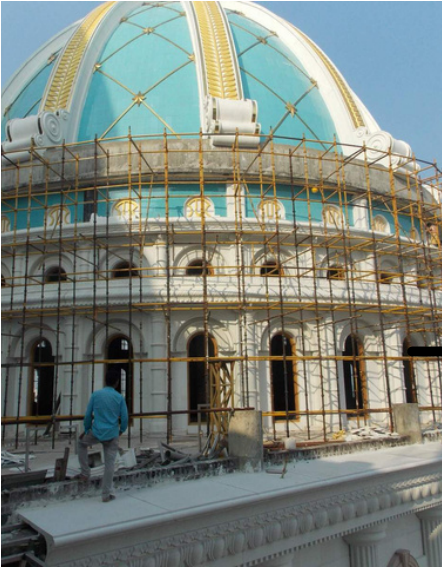
3

Level three

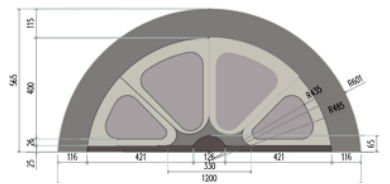
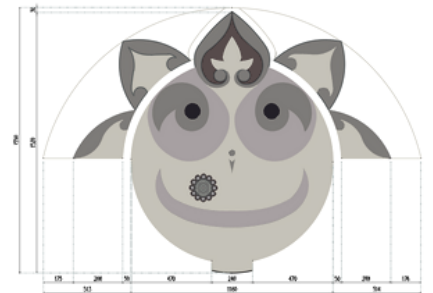
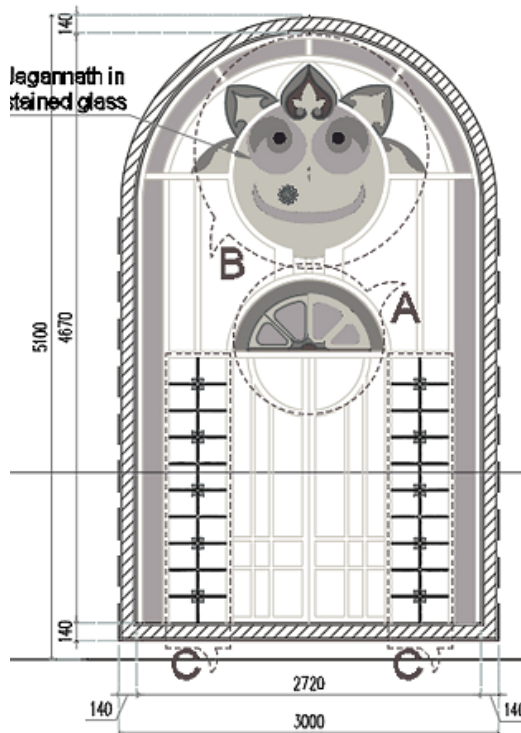
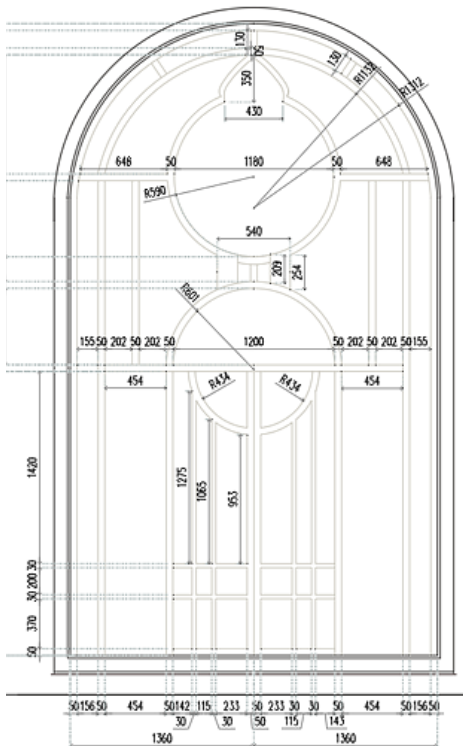
## GRG Ornamentation



# TIER DOORS AND WINDOWS-ONGOING



Site Images

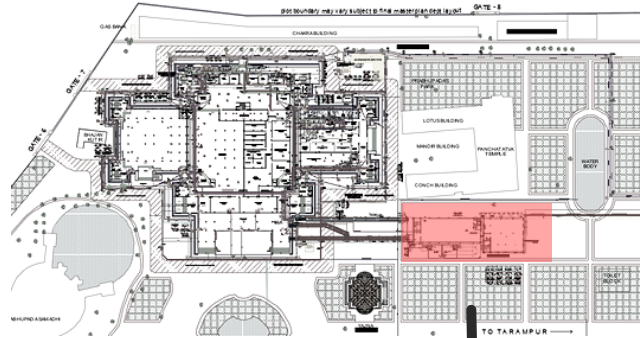


Drawings

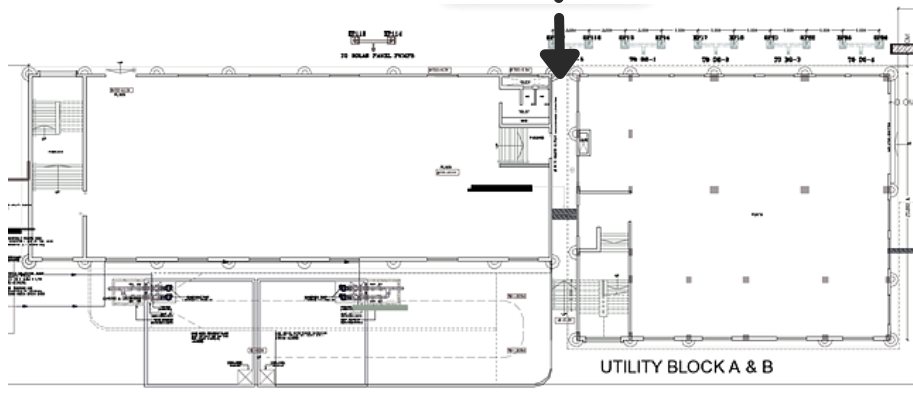


# UTILITY BUILDING- ELEVATION STUDY

Designed for essential services and requirements, the utility block is a simple crisp and to the point design. We have studied the existing building and are in process of designing spaces and contemplating the required areas for the block.



key location



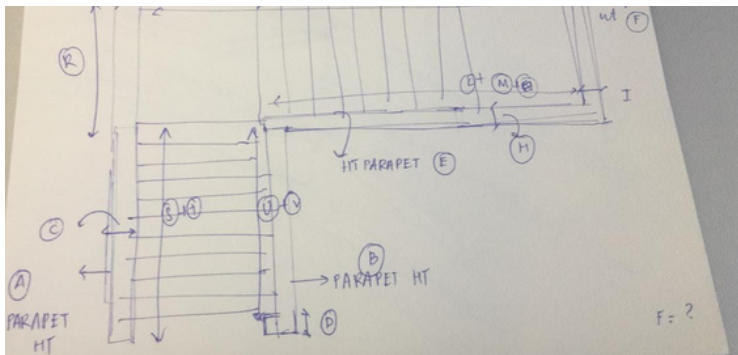
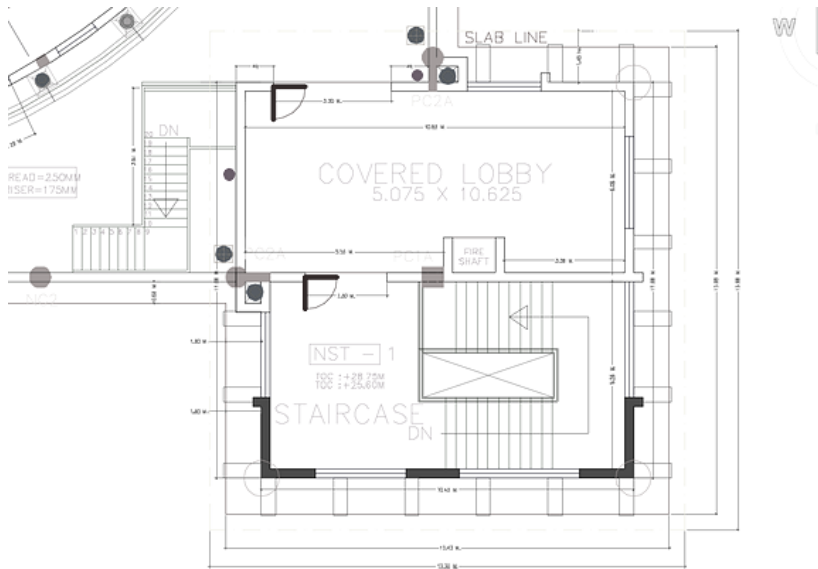
plan



elevation

# BALUSTRADE DESIGNS

The work on balustrades is ongoing on the terrace Level. We are now in process of site measurements and analysis for balustrades on the chatri levels and work has begin n the architectural front.



Drawings

Site Location



Proportion Analysis



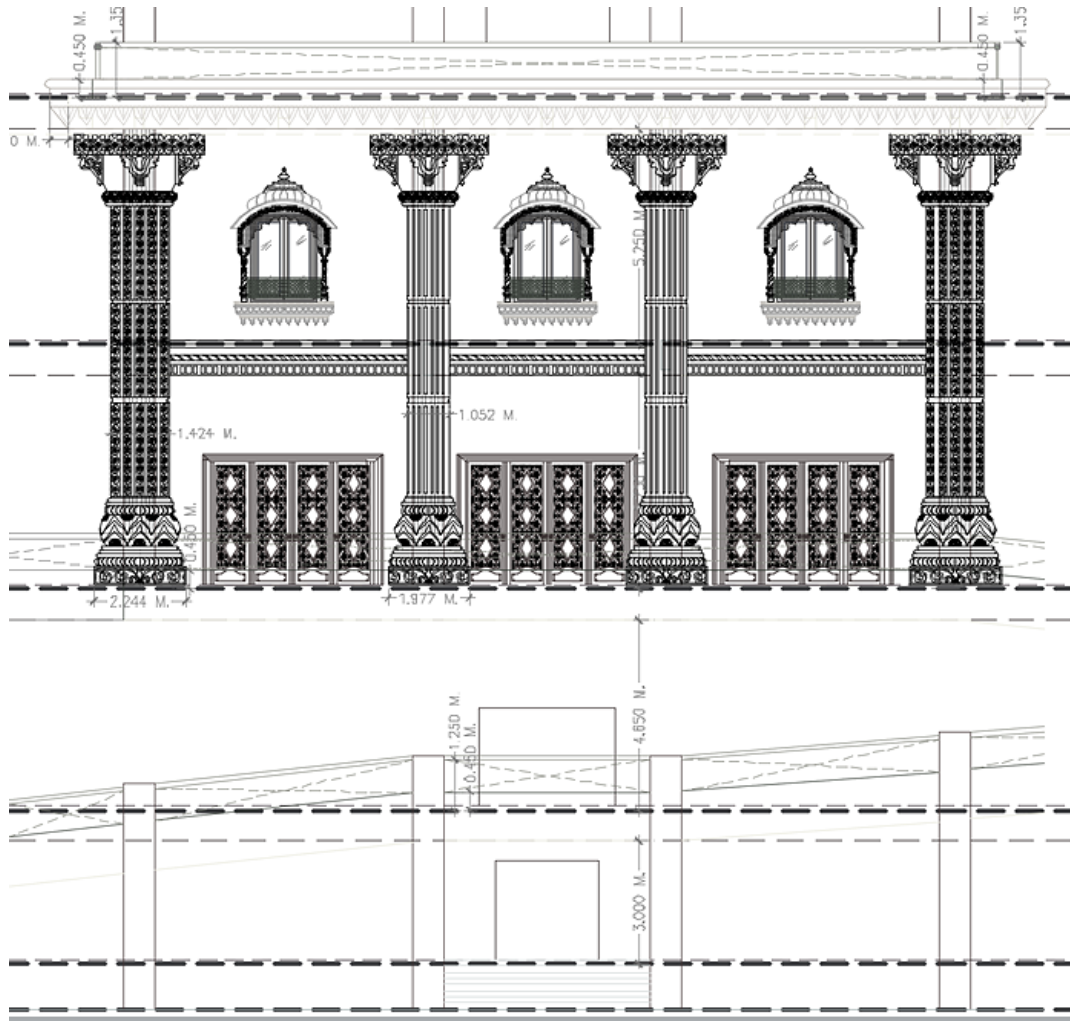
Balustrades Samples

# WORK TO COMMENCE



# REAR CANOPY- START

The rear side of the temple is as elegant as it's front, with decorative arches, cornices and detailed ornamentation.



Architectural Drawing



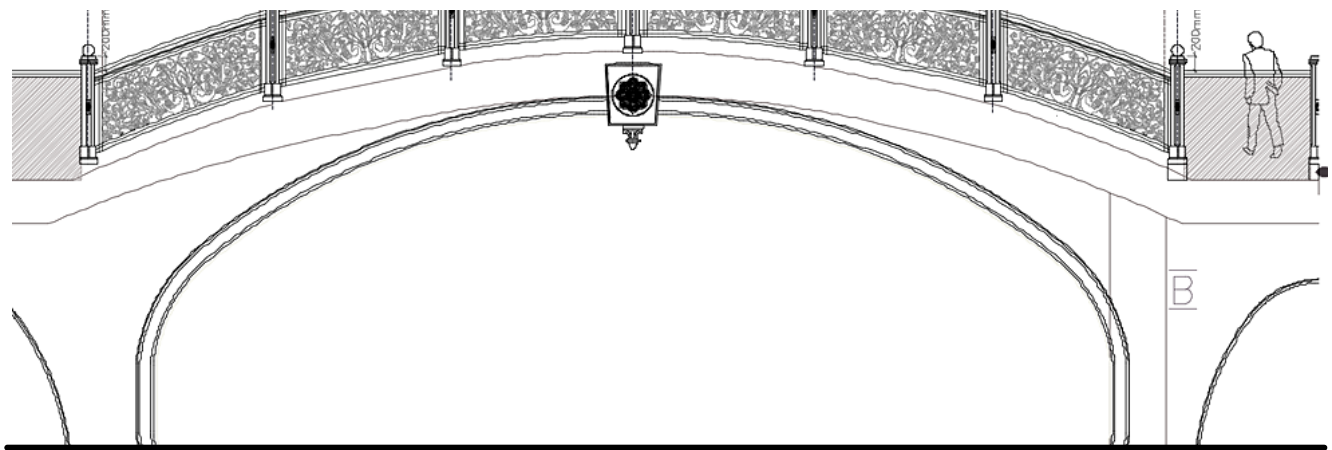
Site Development

# SP BRIDGE-START

The SP bridge exterior and walls are currently in the process for construction. Here are some site updated along with the conceptual visual.



Visualization



Architectural Drawing



SiteDevelopment

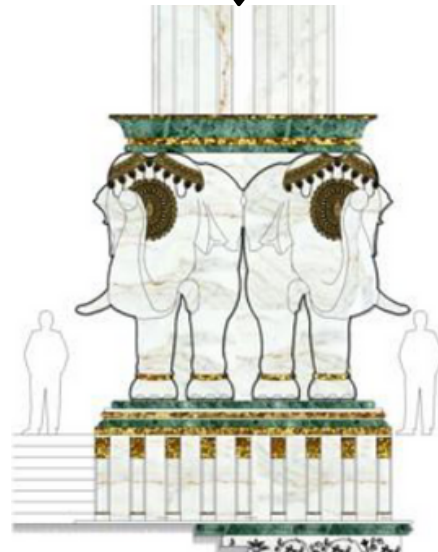


# ELEPHANT COLUMNS- START

The front columns make for one of the most unique design elements of the entrance of the Temple. The entrance is the threshold between the outer world and the home of the deity as the devotee transitions into the temple. Thus all of the minor details and elements play a vital role in the architecture of the building.



Site Location



Visualization in Progress

# OTHER ITEMS TO COMMENCE SOON



Fence Around Jay-Vijay



Parikrama Path



Signage Board



Garuda Temple Placement



Rear Ramp Flooring



Road Level

# CONCLUSION

Architecture and Construction are an art of Juxtaposition. Interpretation and performing skills are exclusive major qualities in the process of construction and this is what makes a building stand on its foundation. With the TOVP, the power factor is the faith and devotion of that is added by every person working on the temple, along with the blessings of Lord Krishna. All this together makes the TOVP a one of a kind in the era of contemporary architecture.

