



Travelling Through the TOVP

"One of the great beauties of architecture is that each time, it is like life starting all over again." – Renzo Piano

From the Head Architect

Every space matters. Every line drawn on the AutoCAD defines that space. With great deliberation and calibration the drawings are released on the site one after another after another after another....

With a total amounting to over 8,000 detail drawings, we gear up towards the upcoming milestones. Refining, reforming, evolving ...and deriving systems to make it even better than before.

Varsha Sharma
(*Vilasini dd*)



Vision

The entire ToVP team is on their toes and working day in and out for the Grand opening in 2024. We have two years to the opening of this monumental project, one which will change the course of human history for generations into the future by dispelling the darkness of ignorance in the world and opening the flood gates of Krishna consciousness to all human society.

Mission

01

**Exterior
Facade**

02

**Main dome
interiors**

03

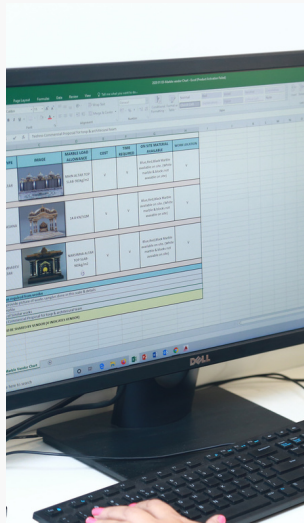
Chandelier

04

**Light Fixture
Mock-Ups**



Current Focus



01 Site Works

The series of onsite works can never be quantified, there are multiple parallels of ongoing works. The highlight however is.....

02 Research

Some areas require a series of research and analysis. For instance, the utility building– We have studied the existing building and now looking into picking the right choices for the new building.

03 Mock ups

Our major accomplishment in the last few days was a beautiful mock-up of the grand light fixture on the main podium. Apart from that, we are also mocking up the palm columns and parapet railings.

04 Creative Works

The Architecture department is working on multiple elements and the current focus is on the reflected ceiling plan, the elephant columns, the grand staircase and the utility building.

MOCK-UPS

Light fixture mock up in the main podium

"Vision is the single most important sense through which we enjoy architecture, and lighting enhances the way we perceive architecture even more."

The Effect of Lighting in a Building

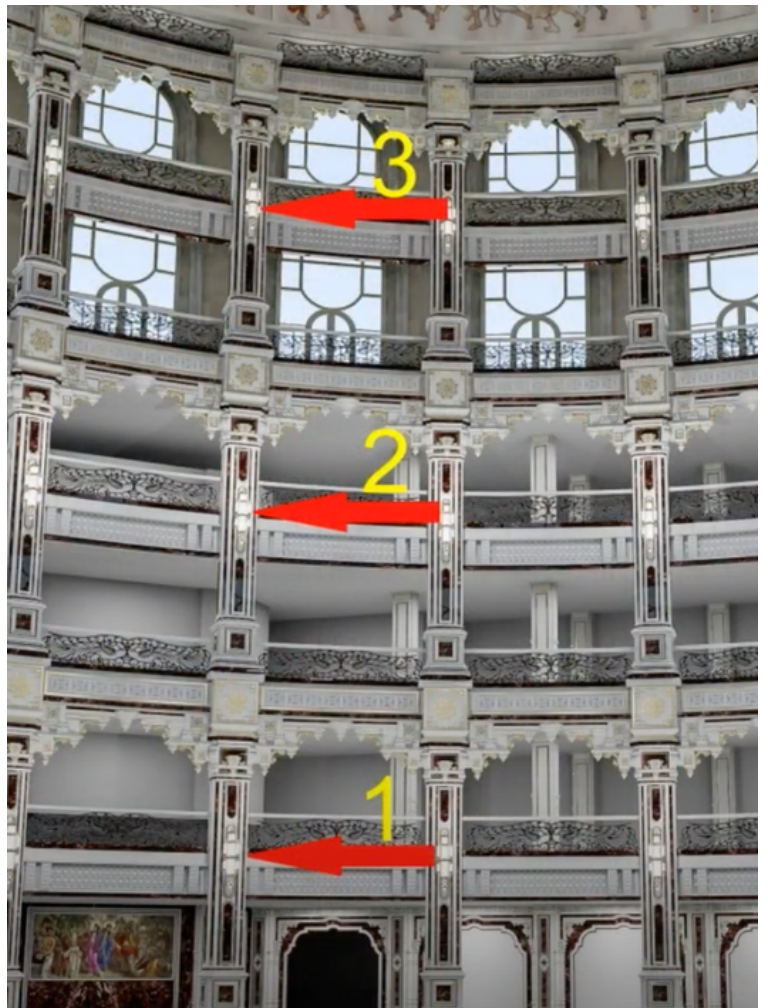
Lighting plays a vital role in the way people experience and understand architecture. Whether buildings and structures are lit naturally or artificially, lighting is the medium that allows us to see and appreciate the beauty in the buildings around us. Lighting can bring an emotional value to architecture – it helps create an experience for those who occupy the space. Whether it's daylighting or artificial lighting, light draws attention to textures, colors, and forms of space, helping architecture achieve its true purpose.

We recently concluded a mock-up of the main podium lighting and in the following pages, we highlight the process that was followed for this.



Mock Ups

The Main podium column light is finalized and sampled. The size and scale of these lights being relatively larger, each little element has to be produced and then assembled together to make the light fitting.



Background

The light fixtures used for the ToVP are curated and designed to fit the language of the Temple. Every detail of the Temple has been well thought out and researched. This has led to multiple visits to different parts of the country as well as the world. An intensive visit to Faridabad led us to find the country's biggest manufacturers of light fittings.



Market Driven Research

Upholding the spirit of innovation and creativity in shaping a whole new temple, our lights are also curated.



Study of Vendors

Give an explanation that the lights offered are based on data and analysis that suit the overall design, we gave a thoughtful approach to choosing the vendors



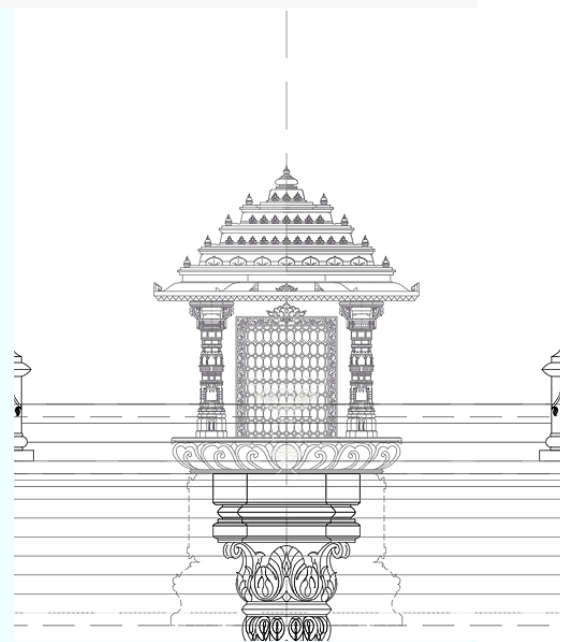
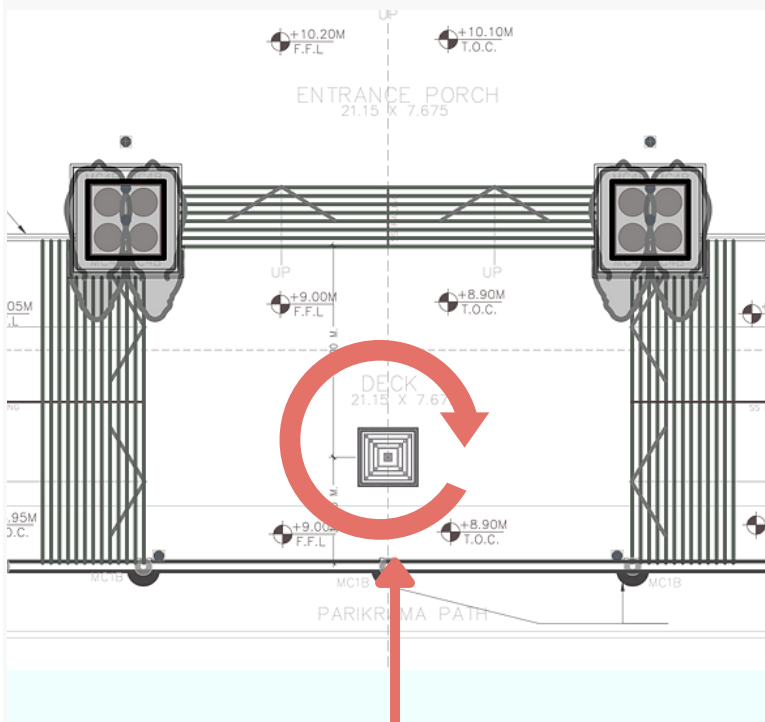
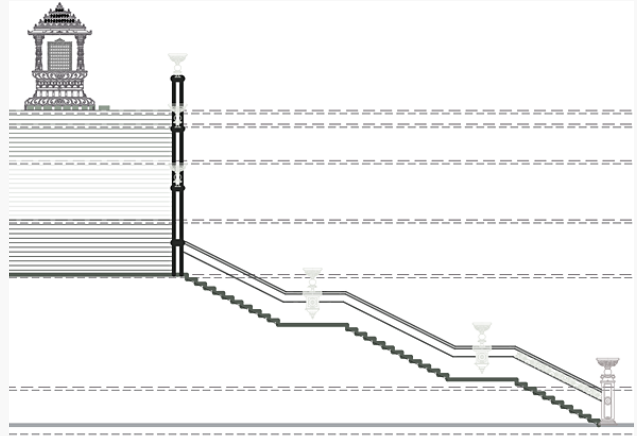
Series of Mock-ups

Just like any other work requires a trial, light fixtures require a mock-up as well. This helps in giving a better understanding of the scale and size of the light fixture as well as its proportion with the space that it is going to go upon.

Garuda

A Brief Thought about Placement

The Location of the Garuda was recently revisited so as to resonate more with the devotee. The purpose is to may way for Parikrama whilst also acquiring eye-contact with the lotus feet.



Status of Work

- ☒ Architectural Drawing
- ☒ Research on Material
- ☐ Construction on Site

REAR SIDE

A lot of the Rear Side works are also in progress. The temple floor canopy and the pujari floor canopy are currently being worked upon.

90%

DRAWINGS COMPLETE

50%

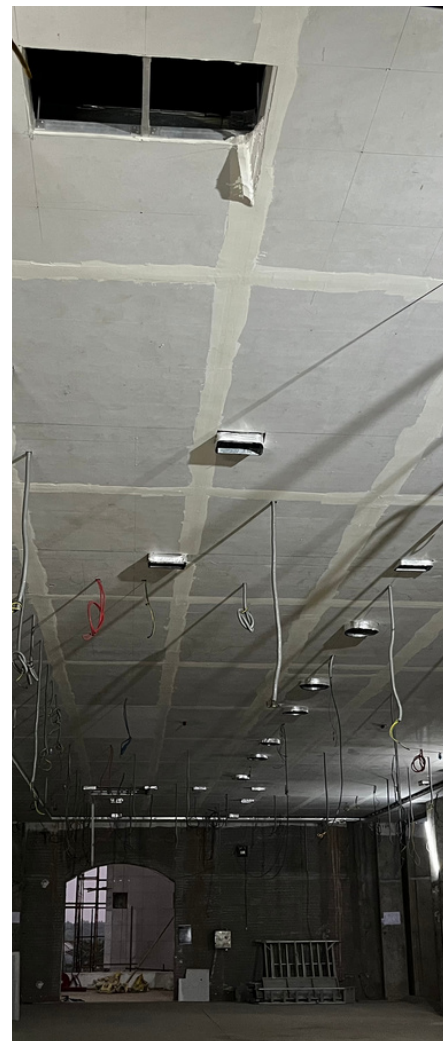
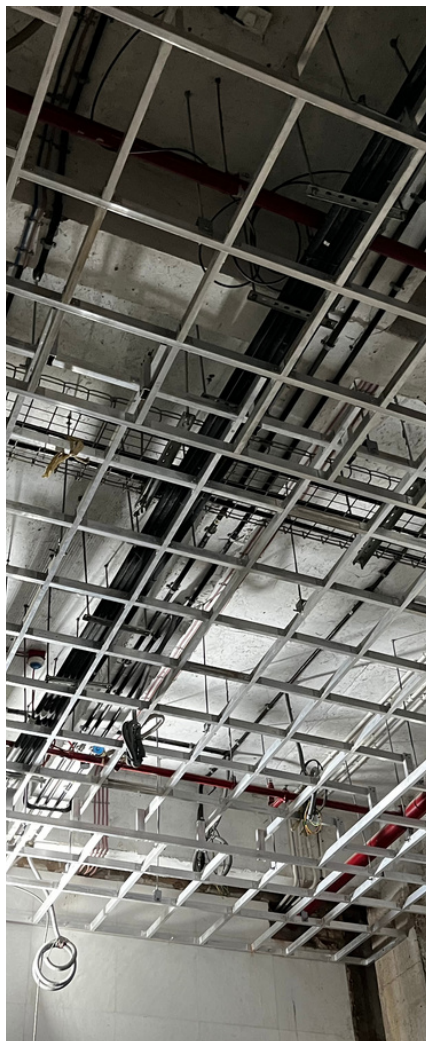
CONSTRUCTION COMPLETE



CEILING PANELS- TEMPLE FLOOR

Details matter. They create depth, and depth creates authenticity.

The Reflected ceiling panels are a series of intricate works that involve multiple-layer technical activities faced by decorative panels. While we shared some detailed drawings in our earlier report, here are some on site updates of construction.



HIGHLIGHTS OF INTERIOR WORKS

RELIEF PANEL



COFFERED CEILING



SANKIRTAN BAND



Other works

01 Window Panels



02 Cornice design



03 Pujari Door



04 Rear Canopy Temple floor



05 Parikrama Path



06 Ramp flooring



07 Ceiling of entrance and side doors



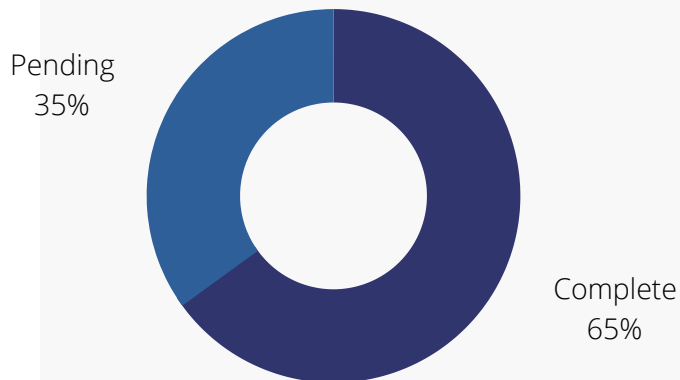
08 MST-1 Jali



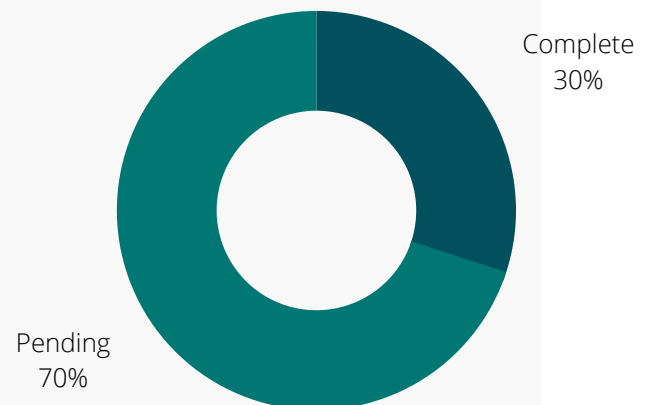
Status of Work



EXTERIOR WORK



INTERIOR WORK



Our Super Team Meets Again



From right to left- Shravananand Prabhu, Hrishikesh Vaze, Anuja Sawarkar, Sandarbh Rajput, Dipti Bhalerao, Varsha Sharma, Anupama Sheth, Aishwarya Jadhav.

The pandemic has not been easy on anyone. But with all the obstacles that were in our way, the team has worked with a good and connected virtual base. Having said that the architecture and construction team finally met in person in Pune and all screens seemed to come alive. Knowing it's going to be a relatively smoother ride with the pandemic settling down, we are even more pumped to work towards the grand opening.

Report Designed and Composed by - Aishwarya Jadhav.