

LATEST ON THE TOVP

2022

PREPARED BY
TOVP Architecture






TABLE OF CONTENTS

From the Head Architect

Our Process

Dashavatar Location

Dashavatar Panel details

Sandstone Updates- Terrace and Palm olumns

Grand Staircase

Coffered Ceiling

RCP Calcium Silicate Panels

Dome Painting

FROM THE HEAD ARCHITECT'S DESK



The ToVP is a project that perpetually works on multiple paradigms at once; design, working drawings, and material research whilst simultaneously casting elements all across the country and building them coherently in Mayapur.

The design team makes sure to put thought into the minutest detail to make sure the design is empathetic and user-friendly to the diversified devotees that will travel through the Temple for the years to come.

In this report, we have highlighted various works that are ongoing at the conceptual, designing, manufacturing, and final construction level.

OUR PROCESS



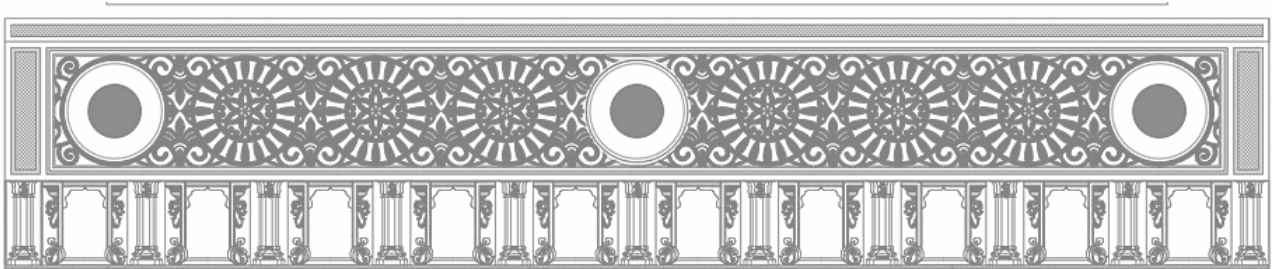
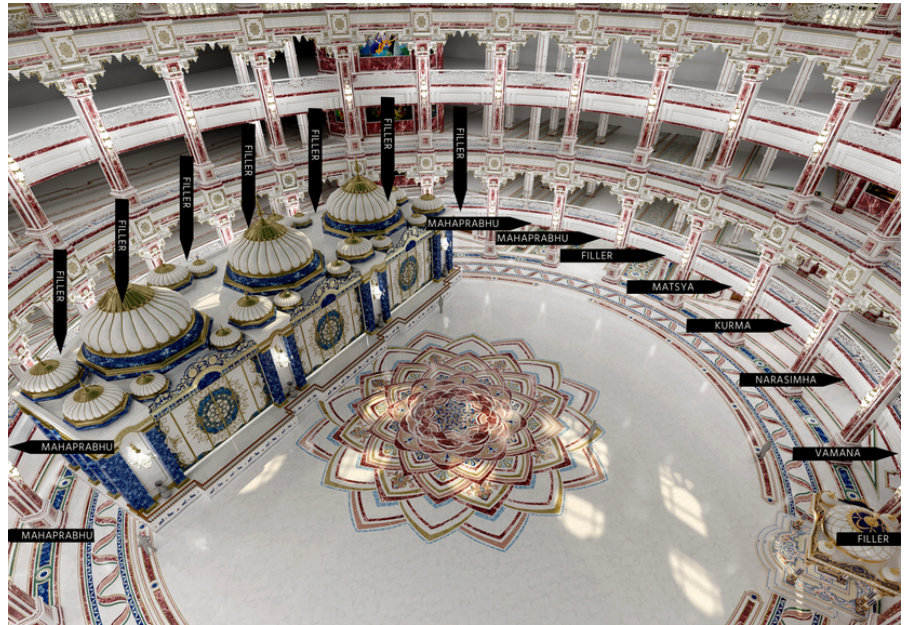
Unique architectural designs could last for many years and become a part of history, ever glorifying those who designed and built them. Our approach is to design every element in its absolute detail and develop a design that brings respite to every soul seeking devotion. Just like any other shelter, humans are in the confines of a building The TOVP stands as the source of the Lord's blessings on every devotee that steps into it.

Therefore, having a good design will improve the comfort and quality of the varied spaces in the building. Advancements in technological features have also improved architectural designs for this structure, making it secure, convenient, and a landmark in history.

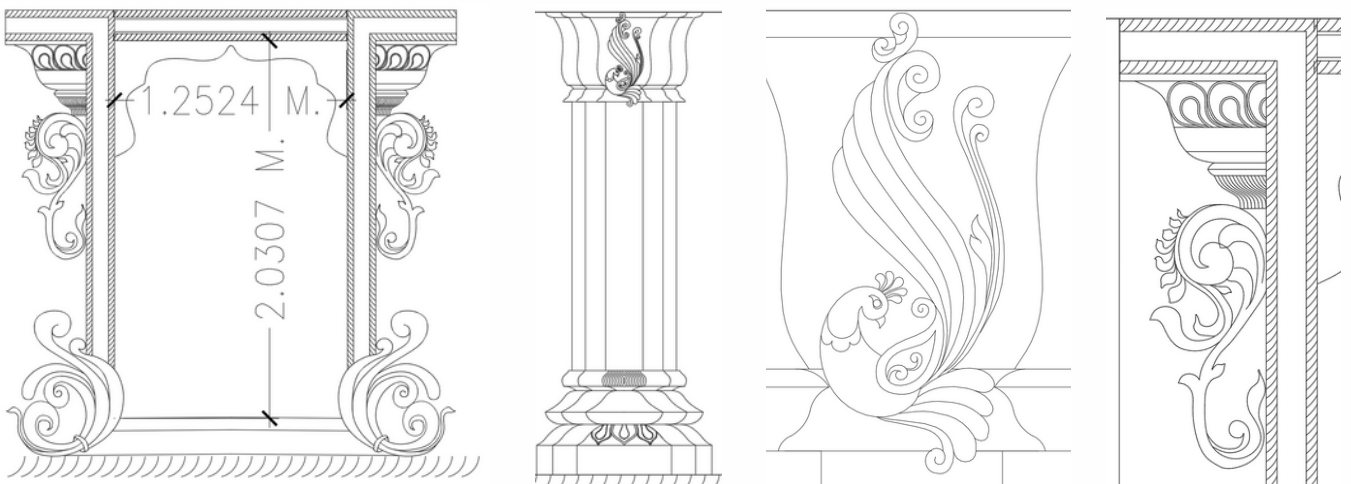
PANEL DETAILS

Each panel has an area of approximately 2.5sqmt and a series of 10 such panels are allocated for each leela. The extensive narrative consists of -

1. MATSYA
2. KURMA
3. VARAHA
4. VAMANA
5. PARASURAMA
6. SRIRAMA
7. SRIBALARAMA
8. SRIKRISHNA
9. HAYAGRIVA
10. NARASIMHA



Single Bay



Panel Design Details

DASHAVATAR DETAILS



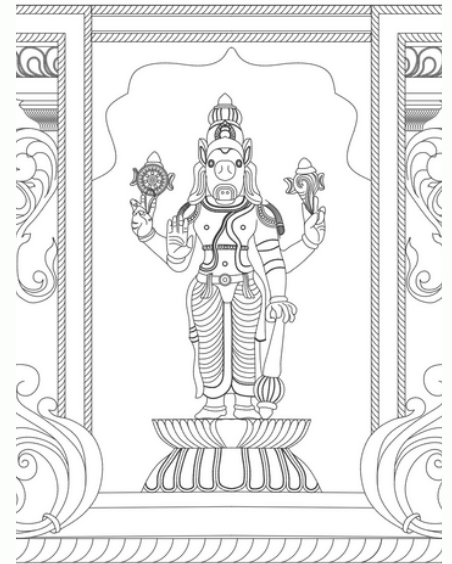
COPYRIGHT
ToVP Architecture Dept.



1. MATSYAVATAR



2. KURMAVATAR



3. VARAHAVATAR



4. VAMANAVATAR



5. NARASIMHAVATAR



6. PARASURAMAVATAR

SANDSTONE UPDATES

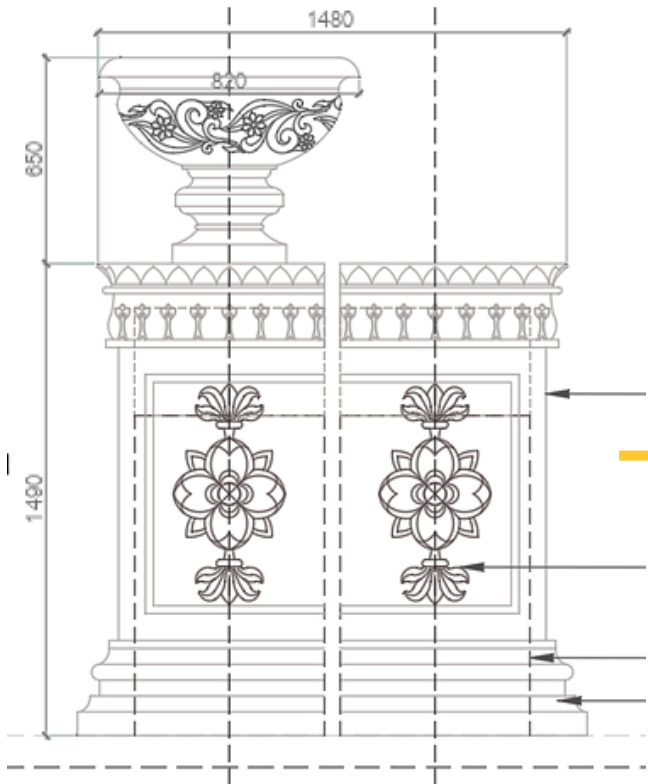


COPYRIGHT
ToVP Architecture Dept.

TERRACE COLUMNS AND PALM COLUMNS



With a building such as the TOVP with complex designs and new materials being designed to interact with each other, it is more important than ever to build and test mock-ups. With all our sandstone elements we make sure to have mock-ups done in advance. In our [earlier report](#), we showed the process of our marble and sandstone mock-ups. Now, here are a few more glimpses of the final carving of the terrace columns.



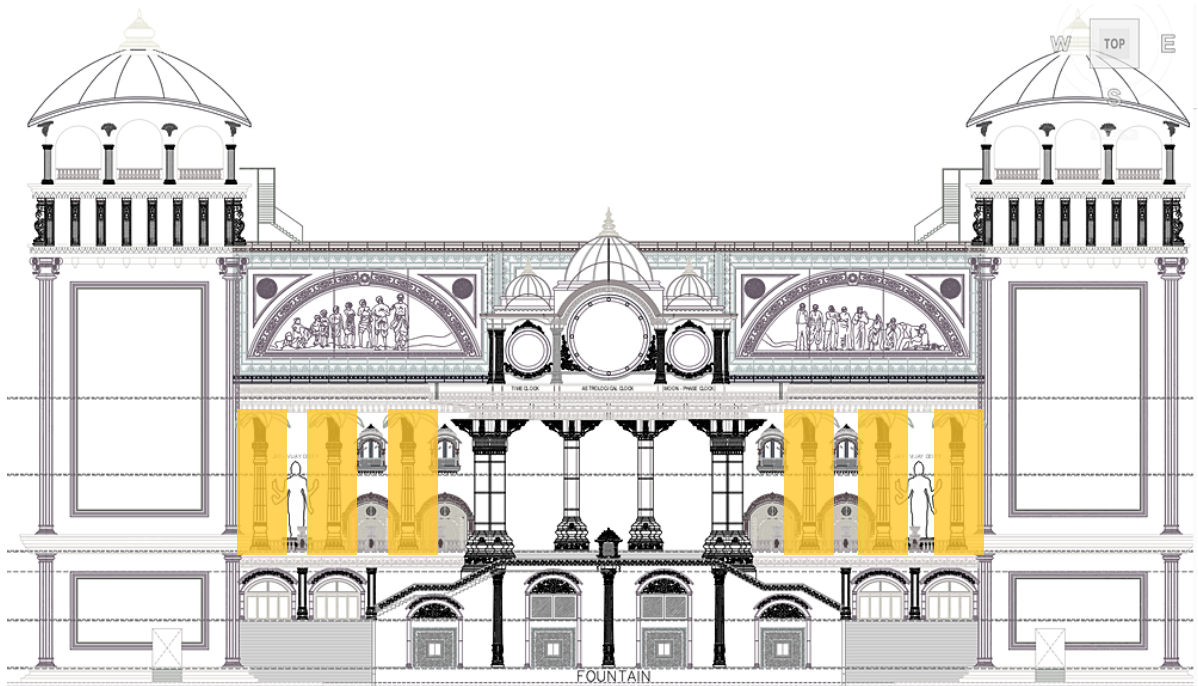
FROM THIS

TO

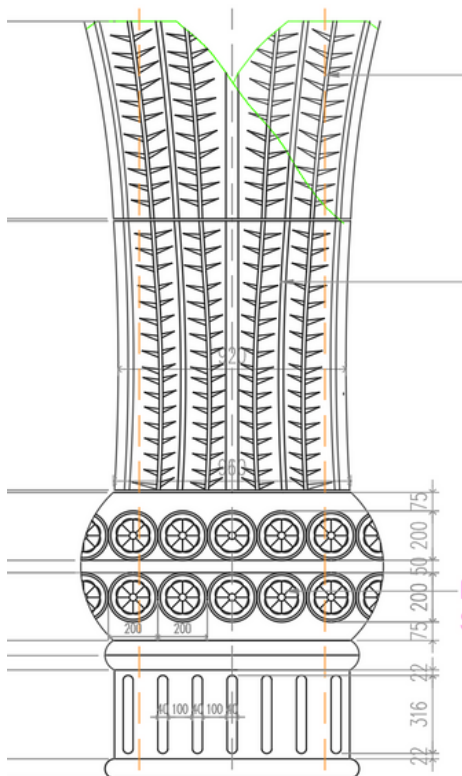
THIS

SANDSTONE UPDATES

TERRACE COLUMNS AND PALM COLUMNS



KEY LOCATION OF PALM COLUMNS



FROM THIS

TO

THIS

GRAND STAIRCASE

KEY CONSIDERATIONS

01

Height of the tread

02

Width of the riser

03

Materials used

04

Aesthetic- Grand
and Welcoming

05

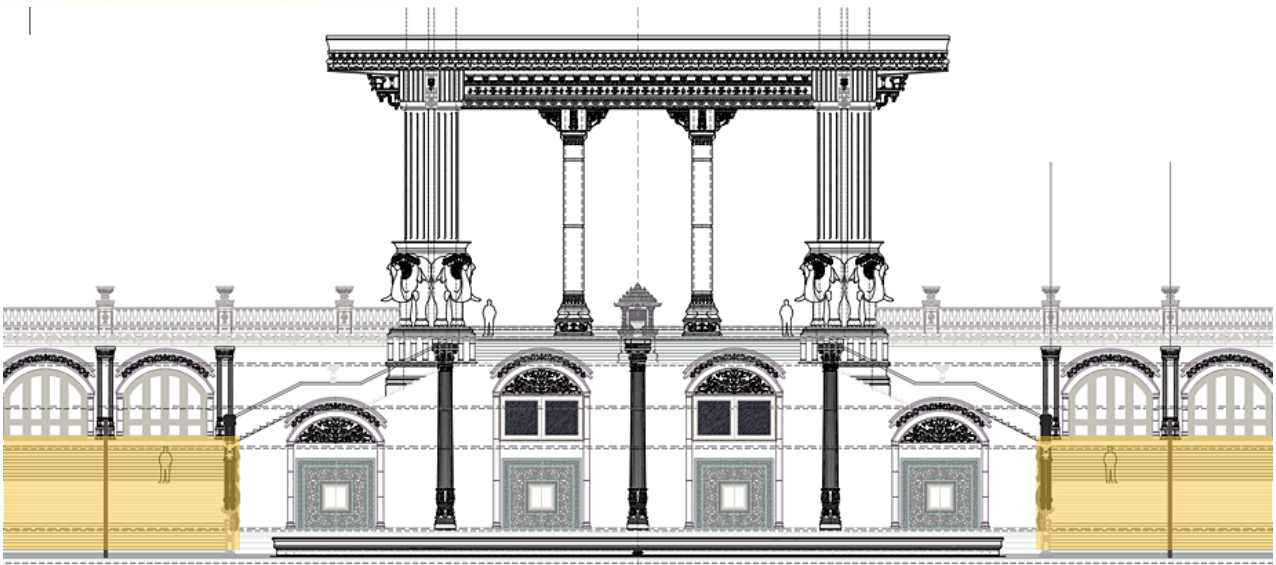
Supporting Artwork

When listing the key elements of the architectural style of the ToVP, the staircase was one of the first vital parts that will come to the user's attention and use. The staircase not only allows for vertical circulation but also serves as an important indicator of the overall architecture of the Temple. The placement of a staircase in this design has been a series of critical decisions, as it frequently influences the layout of the entire campus.

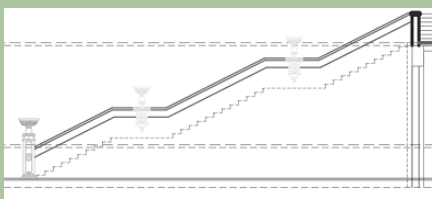
The Grand Staircase lends a sense of grandeur to a building's entry, they can serve as a multifunctional area and amalgamate indoors and outdoors through its functions and the elephant procession artwork. It is intended to provide the best experience of a sense of entrance. Thus, special attention is paid to the height and level of the steps to make it a user-friendly climb to the Main Temple.

AN EFFORT TOWARDS COMFORT

DETAILS OF DIMENSIONS AND LEVELS

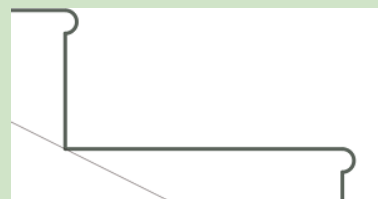


TOTAL HEIGHT



5200MM

HEIGHT OF RISER



150MM

NOSING FOR SAFETY



12.5MM

COMFORT LANDING



2270MM

ACING THE AESTHETIC

DESIGN DETAILS OF THE GRAND STAIRCASE



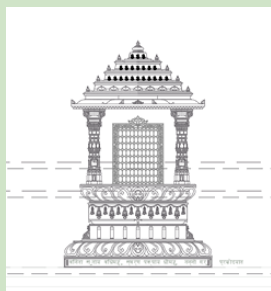
POTS ON PARAPET



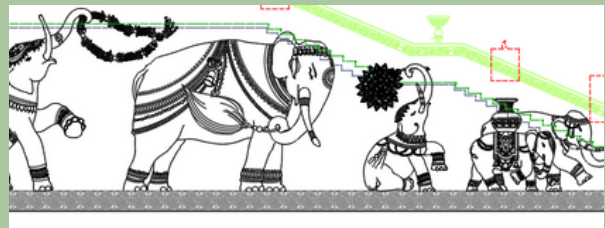
RELIEF WORK ON SIDES



GARUDA UPON ENTRANCE

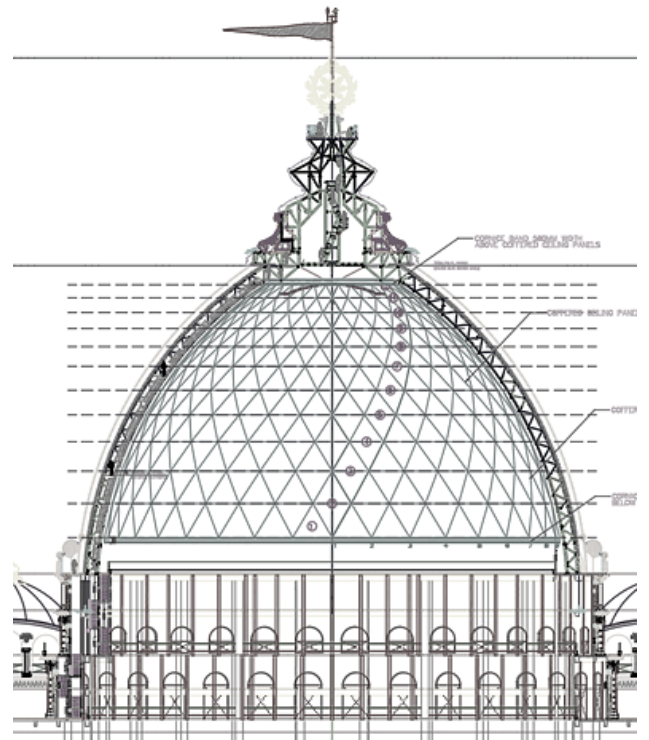


ELEPHANT PROCESSION ON WALLS



COFFERED CEILING

Coffered ceiling panels are being cast at full force on the site and we are through 41% percent of the required panels. Here is some progress from the site.



**700 PANELS
COMPLETE**



**1000 PANELS
TO GO**

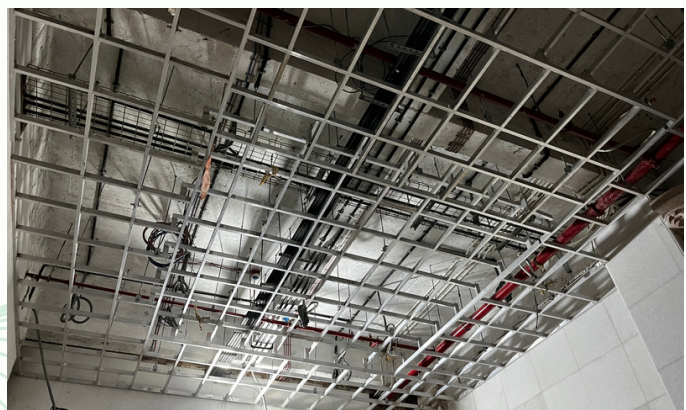
700 OF 1700 PANELS COMPLETE

With the GRC and GRG set up in house, the casting of the panels is a smooth and time-saving process.

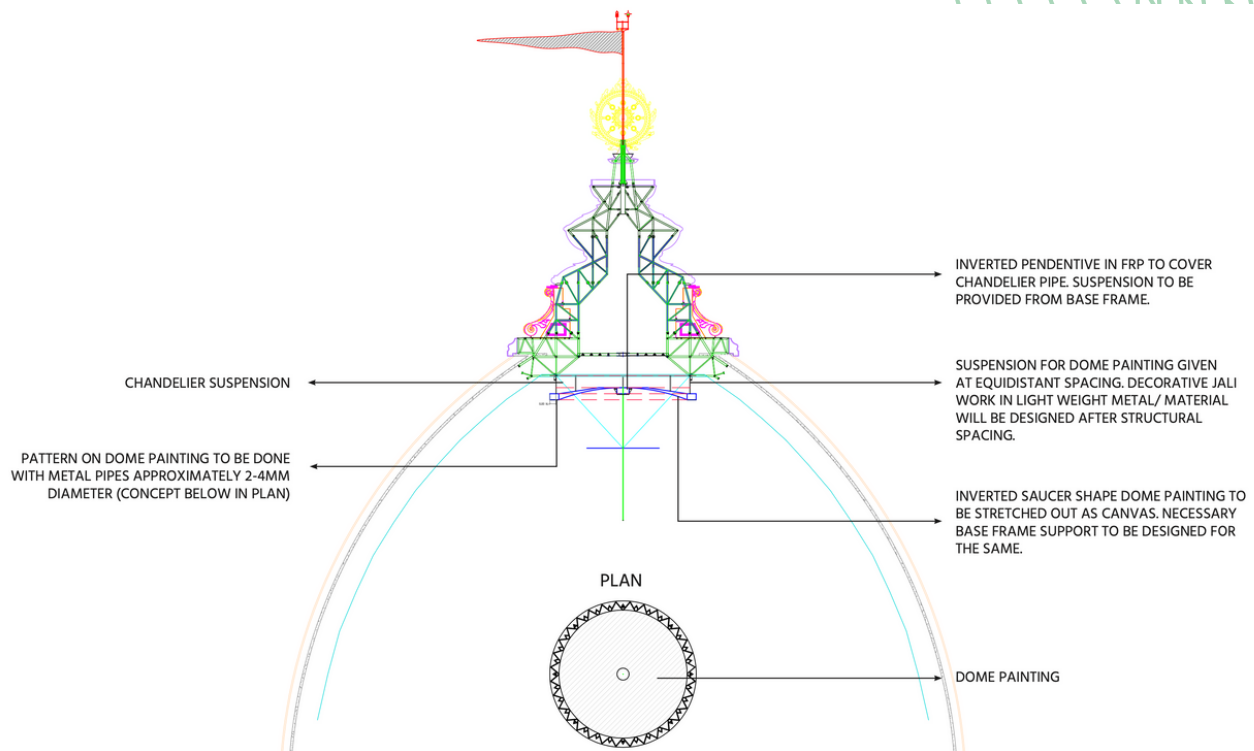


REFLECTED CEILING PANELS- CALCIUM SILICATE DONE

The layers of work that the RCP require is extreme, yet intricate. The acoustic material is in place, and the panels will soon be up.



DOME PAINTING



Artwork is an integral part of the temple. Almost every element of the Temple has a piece of art associated with it. The dome, which is the vertical focal point has a painting at the oculus. While we are still in process of the art work , here are a few initial steps towards the painting.

